

North West Transmission Developments Stakeholder Liaison Group

8 February 2022

1. Welcome and introductions
2. NWTD project and engagement activities update
3. Environmental approvals and planning overview
4. Marinus Link overview
5. Round robin discussion
6. Next steps

NWTD project update

Chris Warr, Community, Communications & Environment Lead, NWTD, TasNetworks

Damian Vermey, Project Director, NWTD, TasNetworks

Staverton to Hampshire Hills

- As a result of the environmental, planning and heritage assessment process, a 10 km section of the preferred route will be realigned to avoid impacts on the karst and cave system and environmentally sensitive areas.
- Landowner engagement continuing following communication of the preferred route realignment in December 2021
- Further field studies commenced over summer period along the revised route inform and finalise the environmental, planning and heritage assessment process. These studies will take an additional six months to complete.

Remaining NWTD

- Approximately 75% landowner access now secured.
- Working with landowners for access for remaining land parcels including Palmerston to Sheffield and Sheffield to Burnie.
- Liaising with Palmerston to Sheffield landowners on removal of existing 220kV line following construction of new line.
- Field survey planning and mobilisation underway for remaining scopes.



Engagement activities update

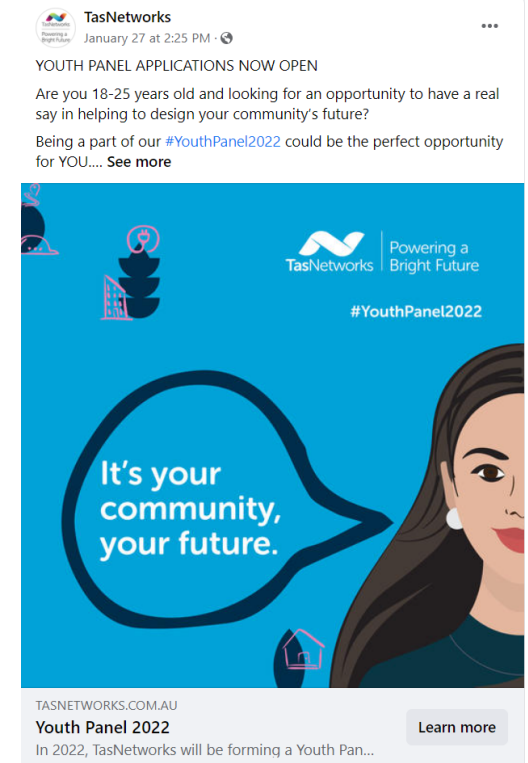
Youth Panel launched

- Launched 27 January; application and nomination process open, close 20 February.
- Stakeholder emails, social media posts Facebook and LinkedIn and newspaper advertisements on 5 February.
- Posters and social media graphics available for stakeholders to use.
- Collaborative content sharing across many networks and organisations.

Webpage

For more information / where to send people:

<https://www.tasnetworks.com.au/youthpanel2022>



Engagement report

- Engagement report June – December 2021 nearing completion
- To be published on Talk with TasNetworks mid-February

Focus groups – November and December 2021

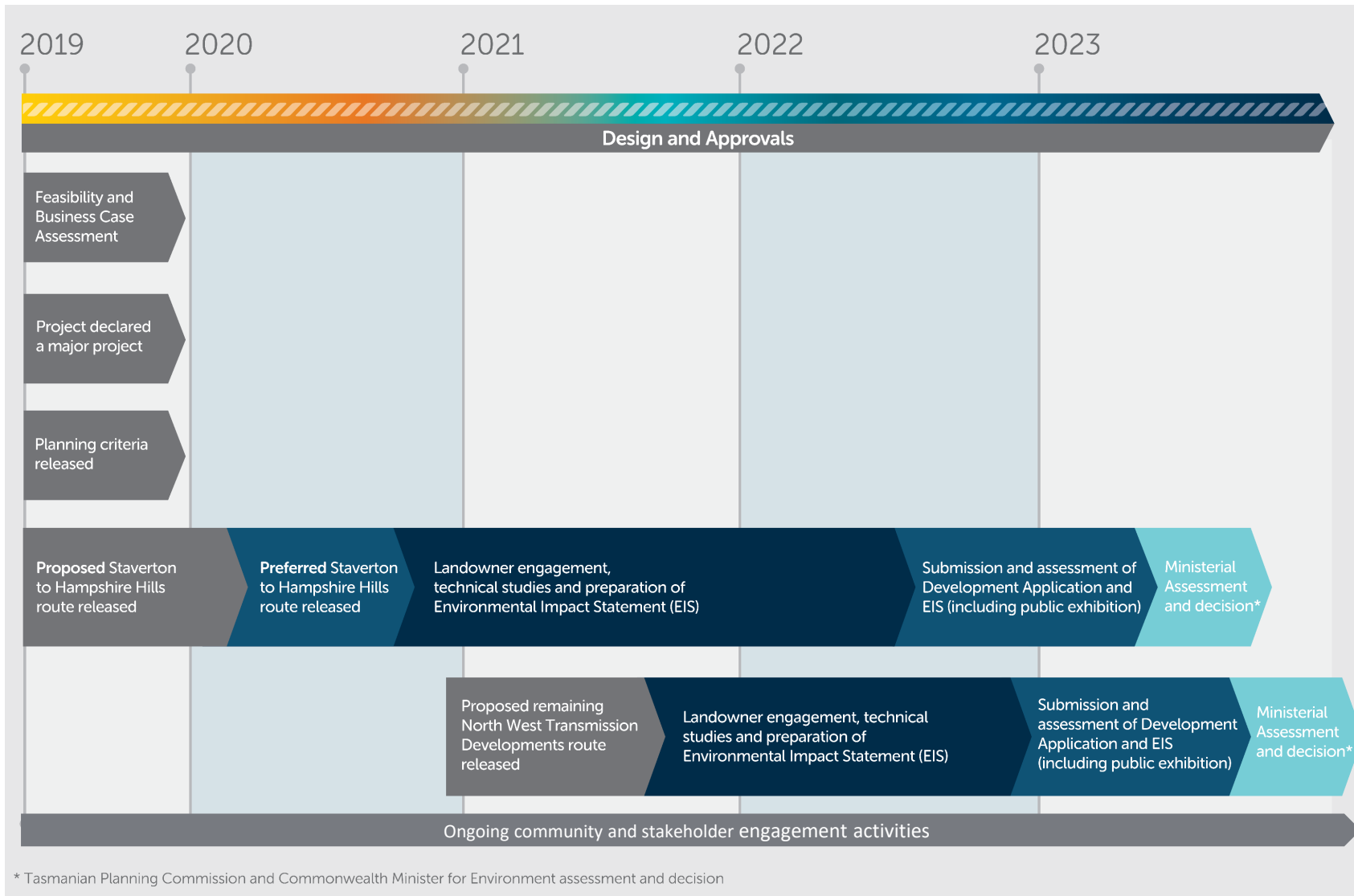
- Four online focus groups held to gain a deeper understanding of community perceptions and hear more about what is important to the community.
- 24 participants across from both rural and urban communities in the project area.

What we heard:

- General low-level of awareness of project, interest in benefits and how they would be realised.
- Potential issues and concerns to consider as planning continues.
- High level of concern regarding impacts on land use in rural areas, including loss of prime agricultural land, compensation negotiations, and impacts during construction.



NWTD timeline



Environmental approvals (see PDF)

Gina Goodman, Operations Lead – Environment, Planning and Heritage Approvals, North West Transmission Developments, TasNetworks

Jessica Hyland, Environment & Planning Specialist, TasNetworks



Delivering low cost, reliable & clean energy

Presentation to: NWTD Stakeholder Liaison Group

08 February 2022

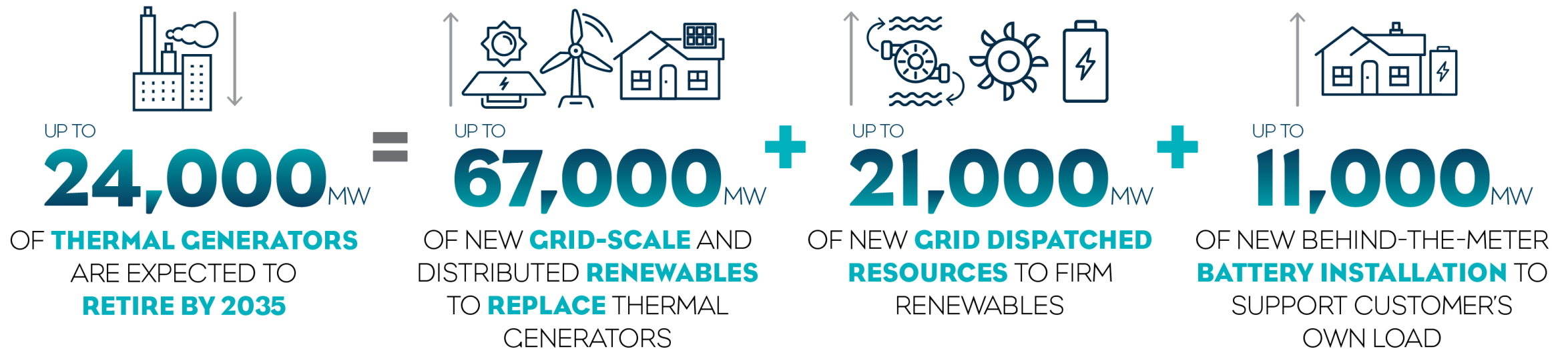
Benjamin White

Executive Manager

Stakeholder Relations, Land & Environment

Marinus Link Pty Ltd

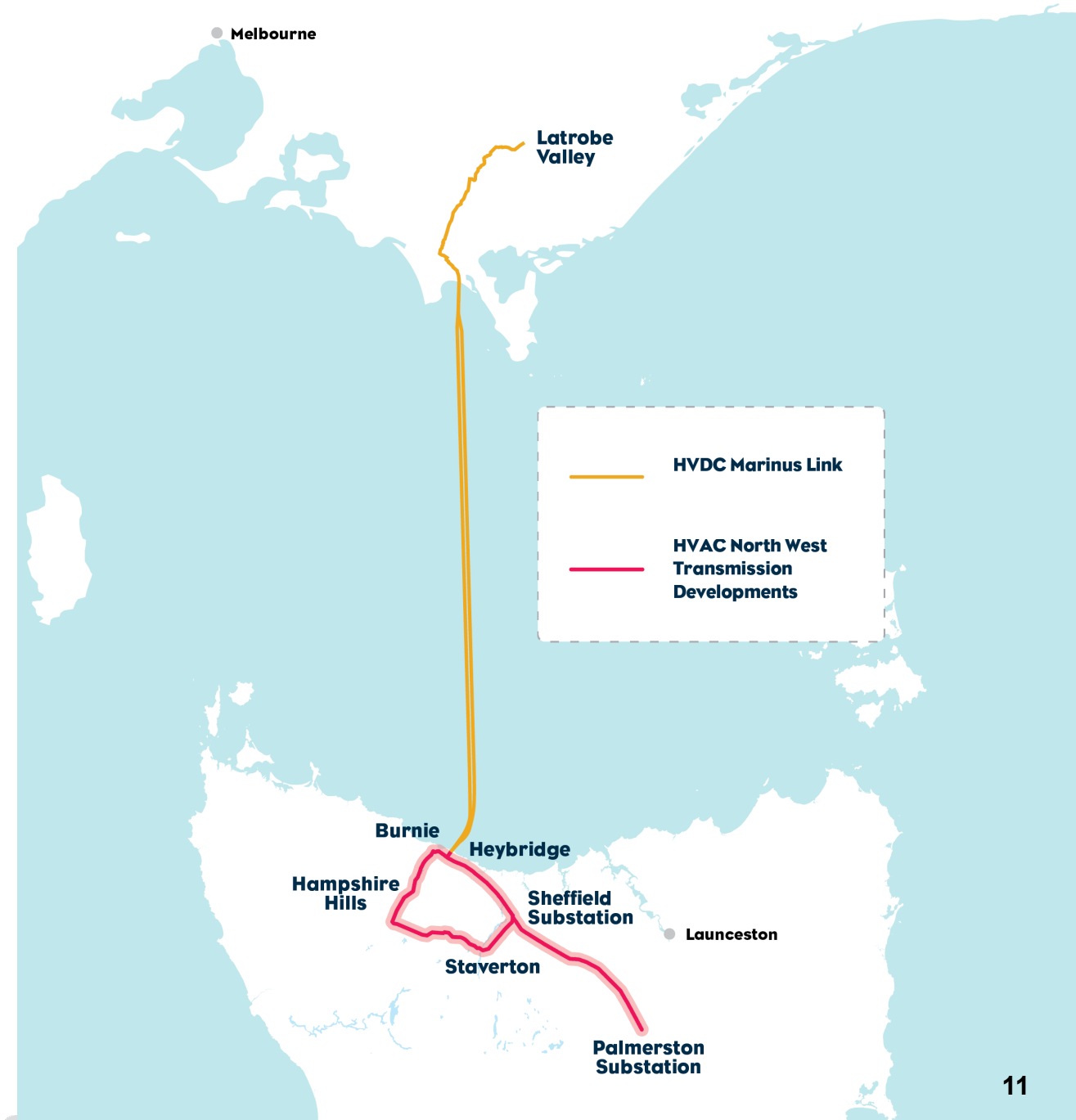
An energy sector in transition



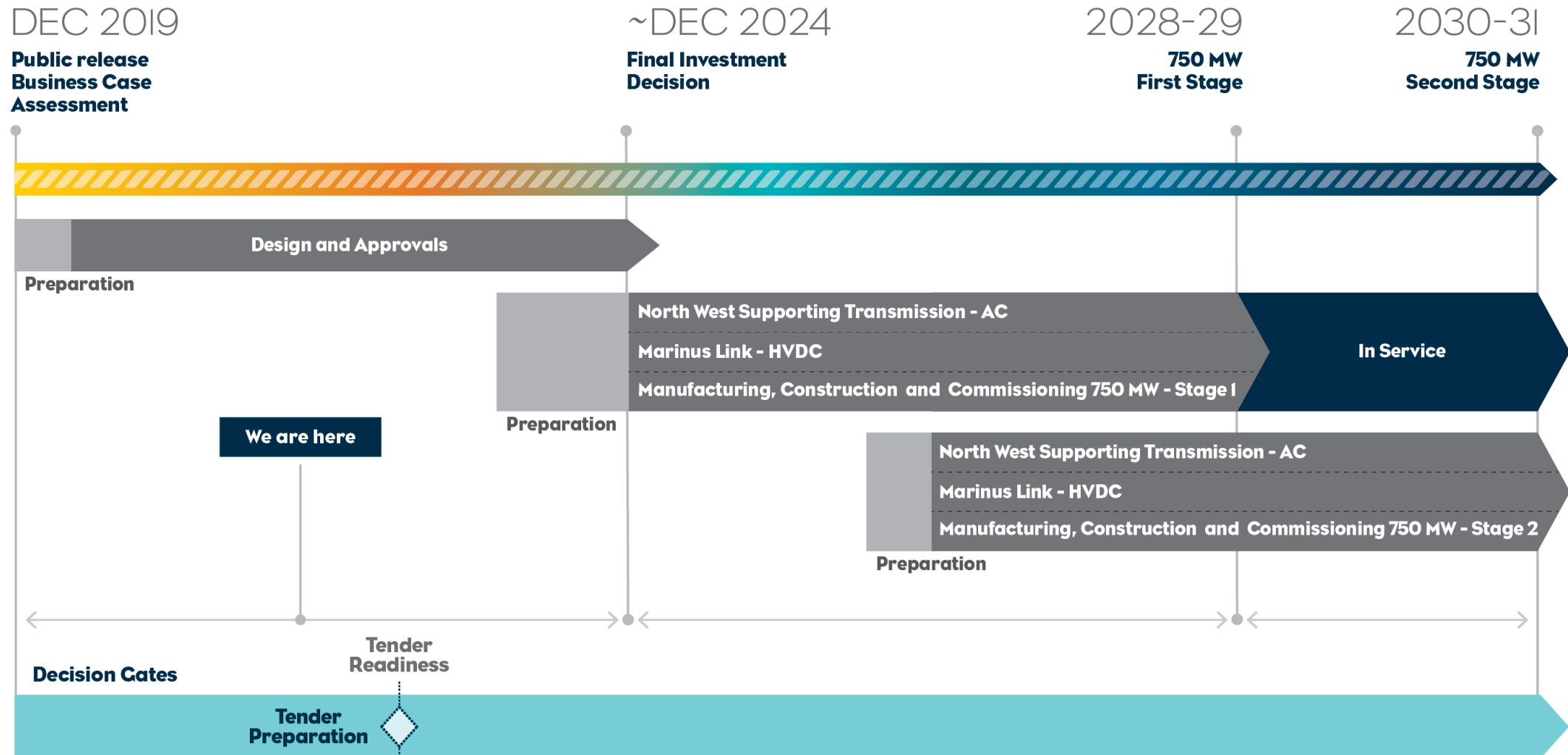
Figures based on the most likely scenario from the AEMO Draft 2022 ISP

A national priority project

- **Actionable Project** that should be ‘in service as early as possible’ in Australian Energy Market Operator (AEMO)’s draft 2022 Integrated System Plan (ISP)
- **1500 MW of increased electricity transmission capacity** between Tasmania and Victoria (including optic fibre), benefiting the NEM
- **‘High Priority’** status in **Infrastructure Australia** listing of nationally significant initiatives.
- Marinus Link key part of **Infrastructure Victoria’s 30 year Strategy** for energy infrastructure
- Currently in **Design and Approvals phase**
- **Final Investment Decision 2024**, built in 2 x 750MW stages (**2028-29 Stage 1 and 2030-31 Stage 2**)

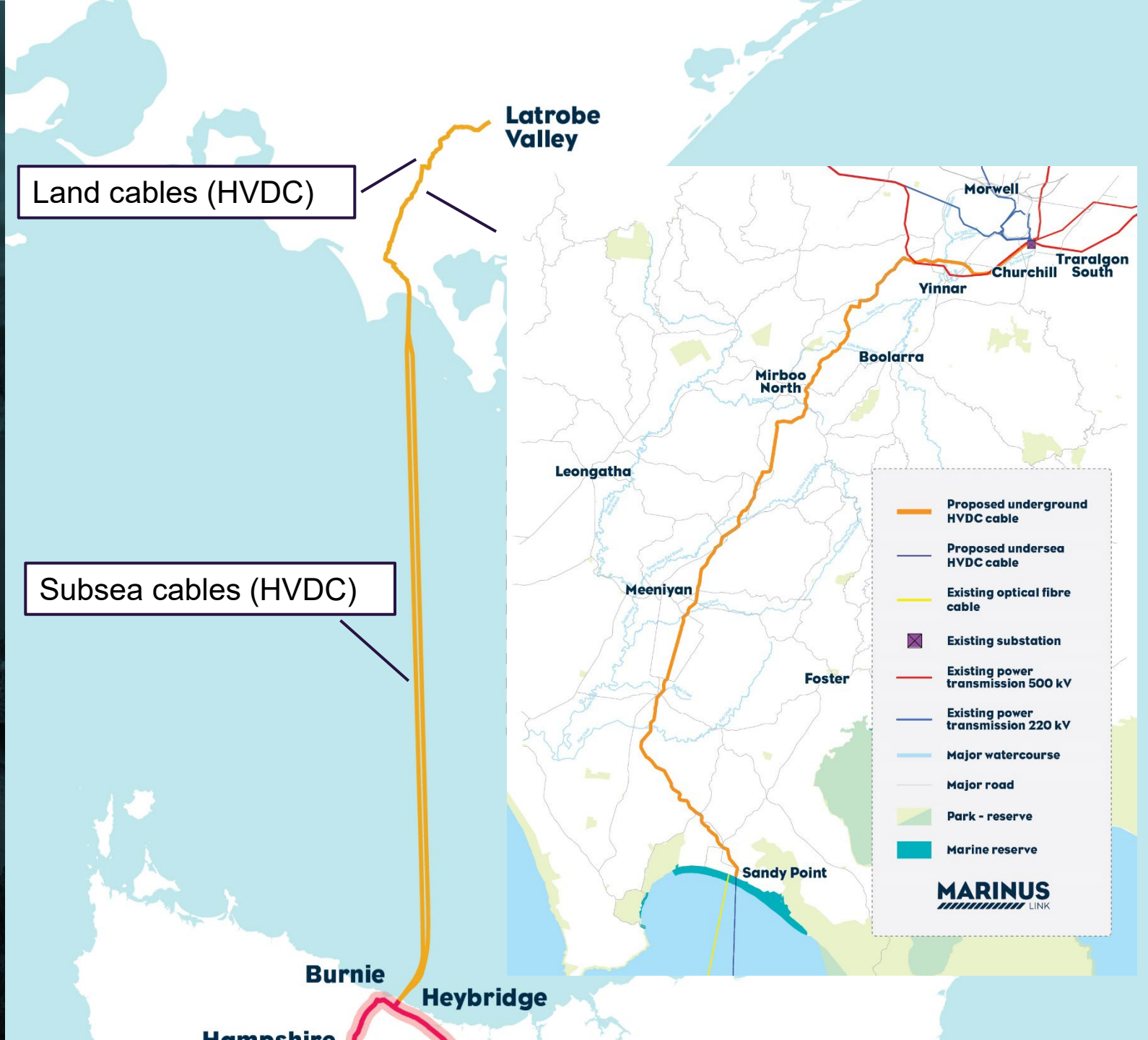


Working timeline



Proposed route overview

MARINUS LINK



Heybridge converter station

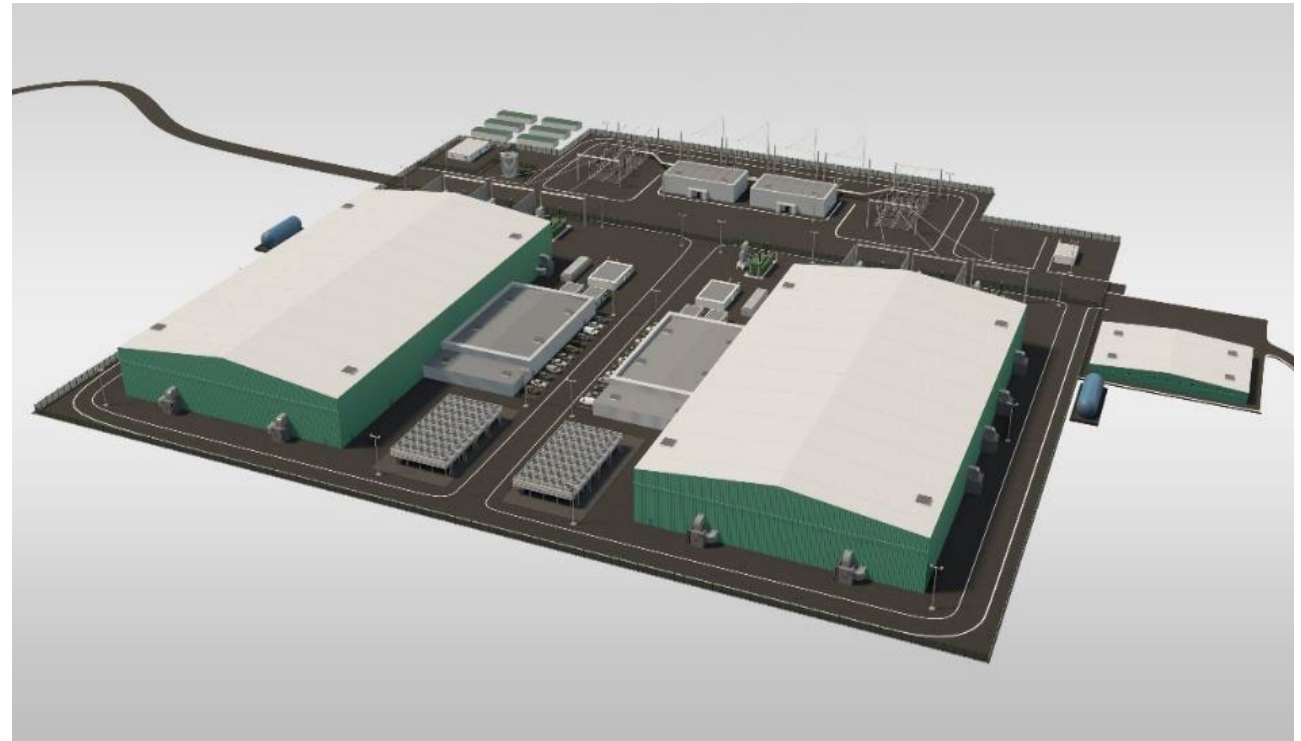
Marinus Link has purchased the former Tioxide site in Heybridge, which included a commitment of **\$400k over 10 years to Burnie City** for initiatives that support the community.



Photo credit:
Stephen Clark

Overview of converter stations

- Converter stations will be located at either end of Marinus Link's HVDC cabling – two at **Heybridge (TAS)**, and two in the Latrobe Valley, Gippsland (VIC).
- Just the converter station infrastructure alone is estimated to be approximately \$1 Billion, so approximately \$500 Million at Heybridge.
- The converter stations will use Voltage Source Conversion (VSC) technology which is a newer technology than what was used for Basslink, offering a greater range of critical energy market and system security services.



Indicative converter station layout schematic

Surveys underway at Heybridge & across Bass Strait

Surveys include:

Up-coming:

- **Marine Engineering Geotechnical Site Investigations (MEGSI)** in the Bass Strait and nearshore environments (TAS and VIC) along the proposed route.
- **Contaminant sampling** in marine area near Heybridge.

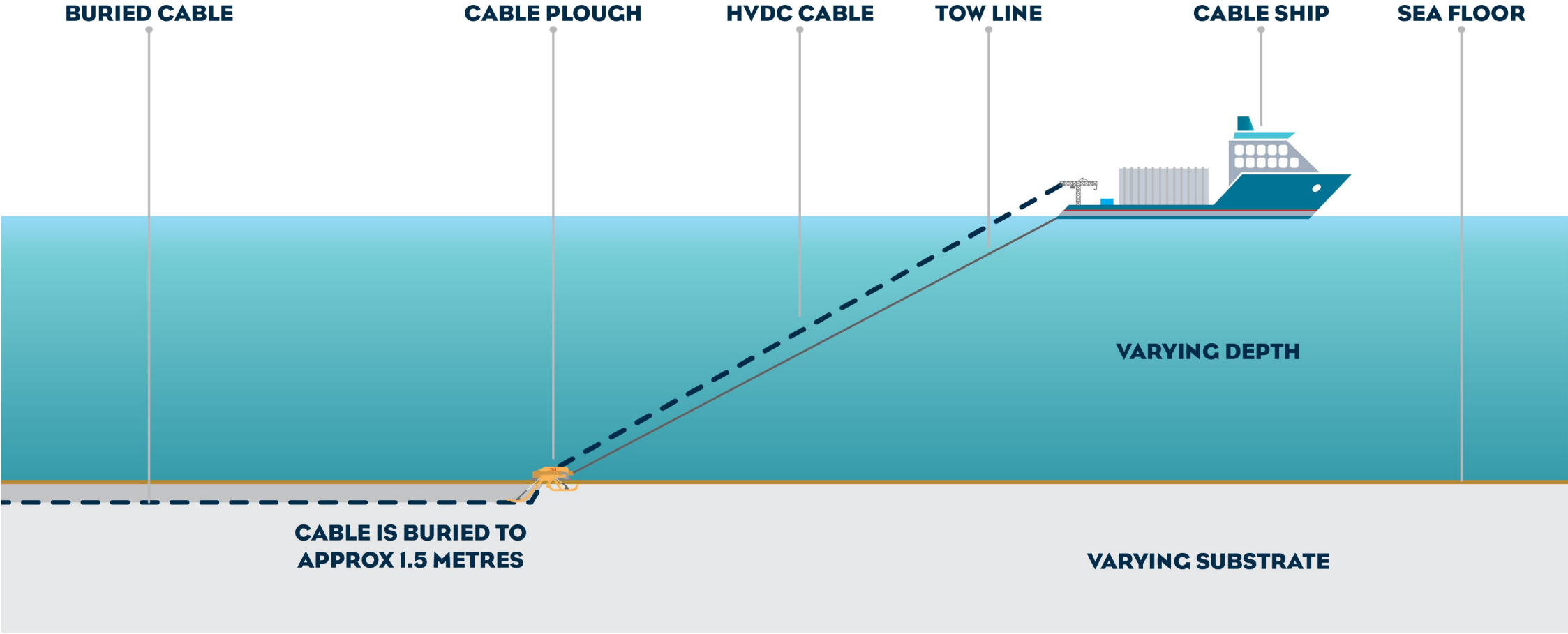
Recently:

- **Geotechnical investigations** at the proposed converter station site and surrounding dunes area.
- **Penguin survey** in the dune area near Heybridge (no penguins found).
- **Marine benthic ecology surveys** in the nearshore environment (Heybridge) and the Bass Strait.
- **Maritime heritage and archaeology survey** in nearshore environment (Heybridge).



All survey work undertaken by Marinus Link provides crucial information to help refine the route and to minimise the project's impact on the environment, community, heritage, and existing infrastructure.

Marine construction



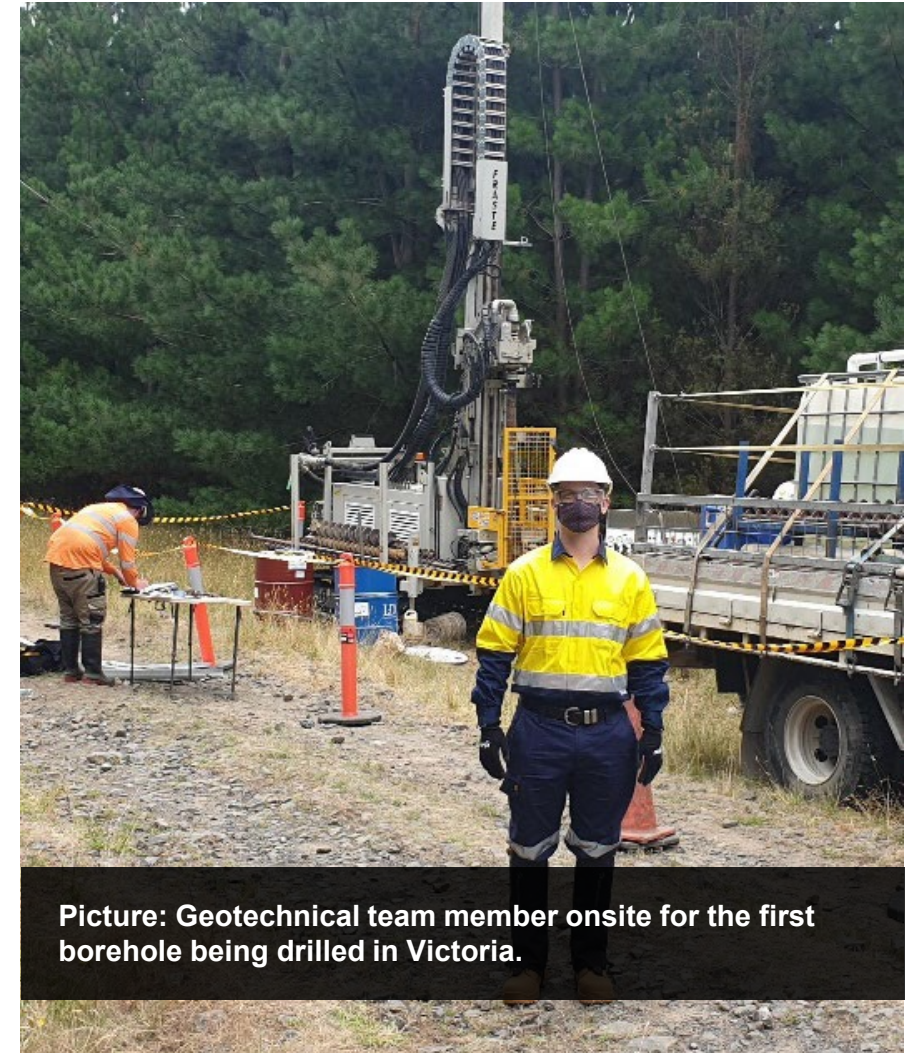
Surveys underway in Victoria

Recently:

- **Geotechnical investigations** along the north-eastern section of the proposed cable route near Driffield, Latrobe Valley.
- **Nearshore benthic ecology survey** off Waratah Bay
- **Maritime archaeology survey** off Waratah Bay
- **Night ecology surveys**, including fauna spotting in Victoria

Upcoming:

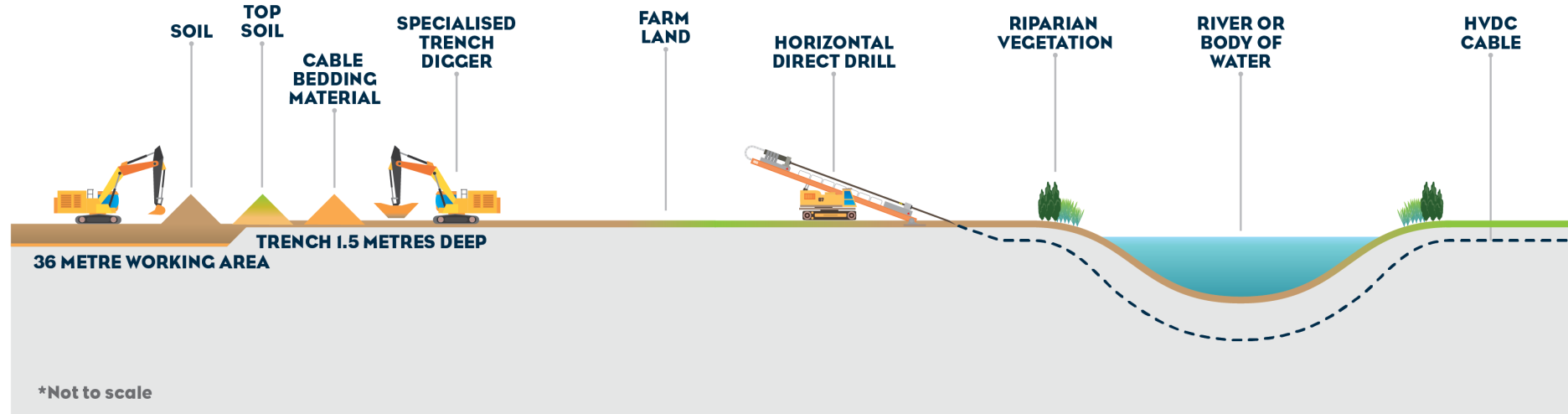
- Further ecology and cultural heritage surveys
- **Land geotechnical investigations** focusing on private, Crown Land and additional areas where the project has approved access in Victoria



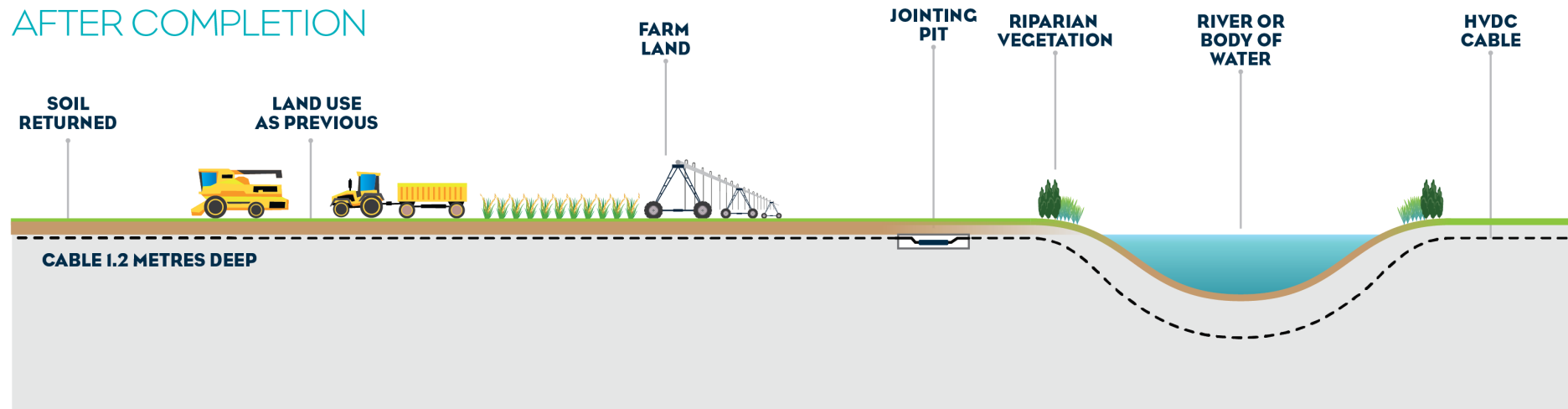
Picture: Geotechnical team member onsite for the first borehole being drilled in Victoria.

Land construction

INDICATIVE CONSTRUCTION



AFTER COMPLETION



Engagement overview – to date

We've undertaken some early engagement with relevant landowners, government & industry stakeholders, and the community to raise awareness of the project and route selection process.

Engagement completed in 2021 was designed to collect feedback from landowners and the community on the proposed route for Marinus Link:

- Dedicated land agents engaging regularly with approximately 0 directly impacted landowners
- 175 attendees across four drop-in sessions in Jan-Mar 2021
- 200 visitors to the Farm World exhibit
- 2 webinars – 70 attendees
- Pop-up info sessions at Traralgon and Leongatha markets in Nov-Dec 2021
- One-on-one project briefings with community and industry stakeholders



Gippsland Stakeholder Liaison Group (GSLG)

- Representatives from:
 - South Gippsland Shire Council
 - South Gippsland Landcare Network
 - Gunaikurnai Land and Waters Aboriginal Corporation
 - TAFE Gippsland
 - Committee for Gippsland
 - Latrobe Valley Authority
 - West Gippsland Catchment and Management Authority
 - Gippsland Trades and Labour Council
 - Federation University
 - GROW Gippsland
- First meeting was held in December 2021 with bi-monthly meetings scheduled for 2022.
- A key initial focus of the GSLG will be identifying economic development opportunities across both Marinus Link and the Gippsland region more broadly.

**Marinus Link unlocks savings of at least
140 million tonnes of CO₂ by 2050 = removing more
than a million petrol/diesel cars off the road**





Questions?

MARINUS
LINK

Group discussion

- Opportunity for SLG Members to share feedback on NWTD from internal and external discussions.
- Share feedback on how TasNetworks can further support SLG organisations/stakeholders/communities to broaden their understanding of NWTD.

Next meeting: Tuesday 5 April

- Topics for next meeting – *what would you like to see on the agenda?*
- SLG survey

Feedback and contact details

For more information, please direct people to:

- Web** talkwith.tasnetworks.com.au
- Email** projectmarinus@tasnetworks.com.au
- Call** 1300 127 777
- Write** Tasmanian Networks Pty Ltd
PO Box 606
Moonah Tasmania 7009

Thank you