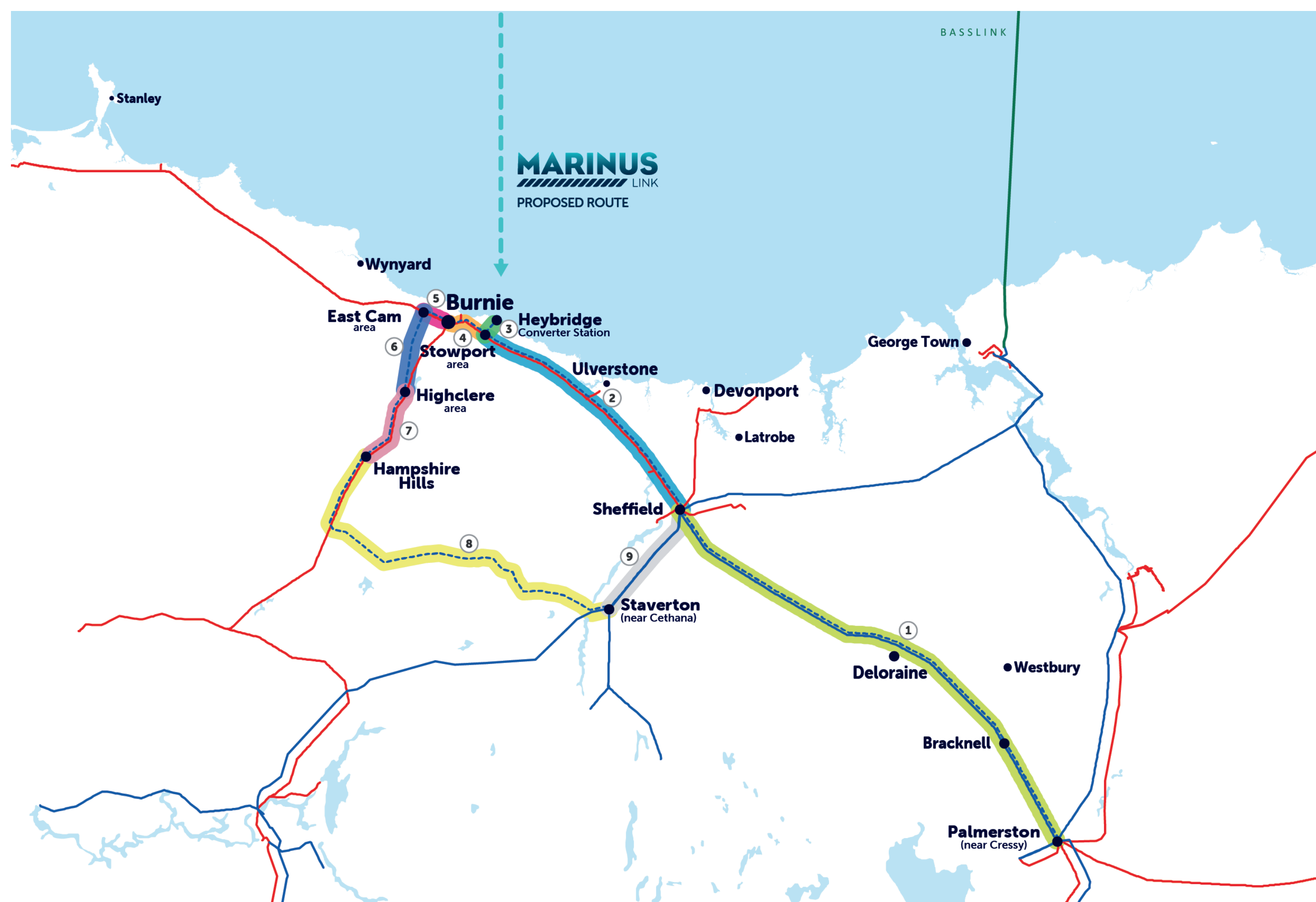


North West Transmission Developments - Towers and easements



North West Transmission Developments indicative routes

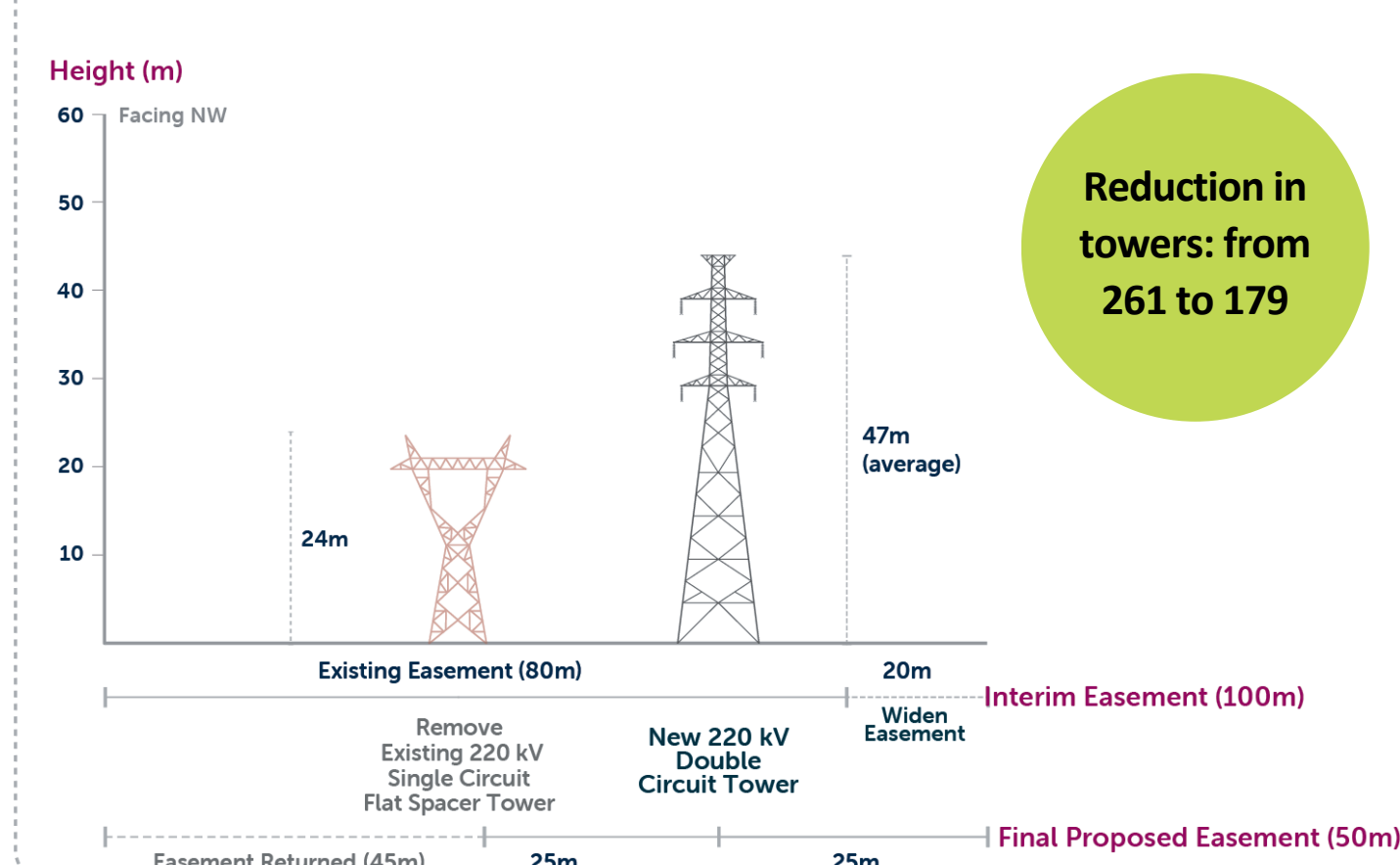
- | | | |
|--|---|--|
| ① Palmerston to Sheffield
Length: ~80km - Reduction in towers: from 261 to 179 | ④ Stowport area to Burnie
Length: ~5km - Reduction in towers: from 19 to 14 | ⑦ Highclere area to Hampshire Hills
Length: ~9.3km - New towers: ~20 |
| ② Sheffield to Stowport area
Length: ~42km - Reduction in towers: from 119 to 93 | ⑤ Burnie to East Cam area
Length: ~4.6km - New towers: ~13 | ⑧ Stawerton to Hampshire Hills
Length: ~60km - New towers: ~124 |
| ③ Stowport area to Heybridge Converter Station
Length: ~3.2km - New towers: ~18 | ⑥ East Cam area to Highclere area
Length: ~15.2km - New towers: ~29 | ⑨ Stawerton to Sheffield
Length: ~18.6km - New towers: 0 (existing) |

— 220 kV existing transmission
— 110 kV existing transmission
— New 220 kV transmission in new or widened easement

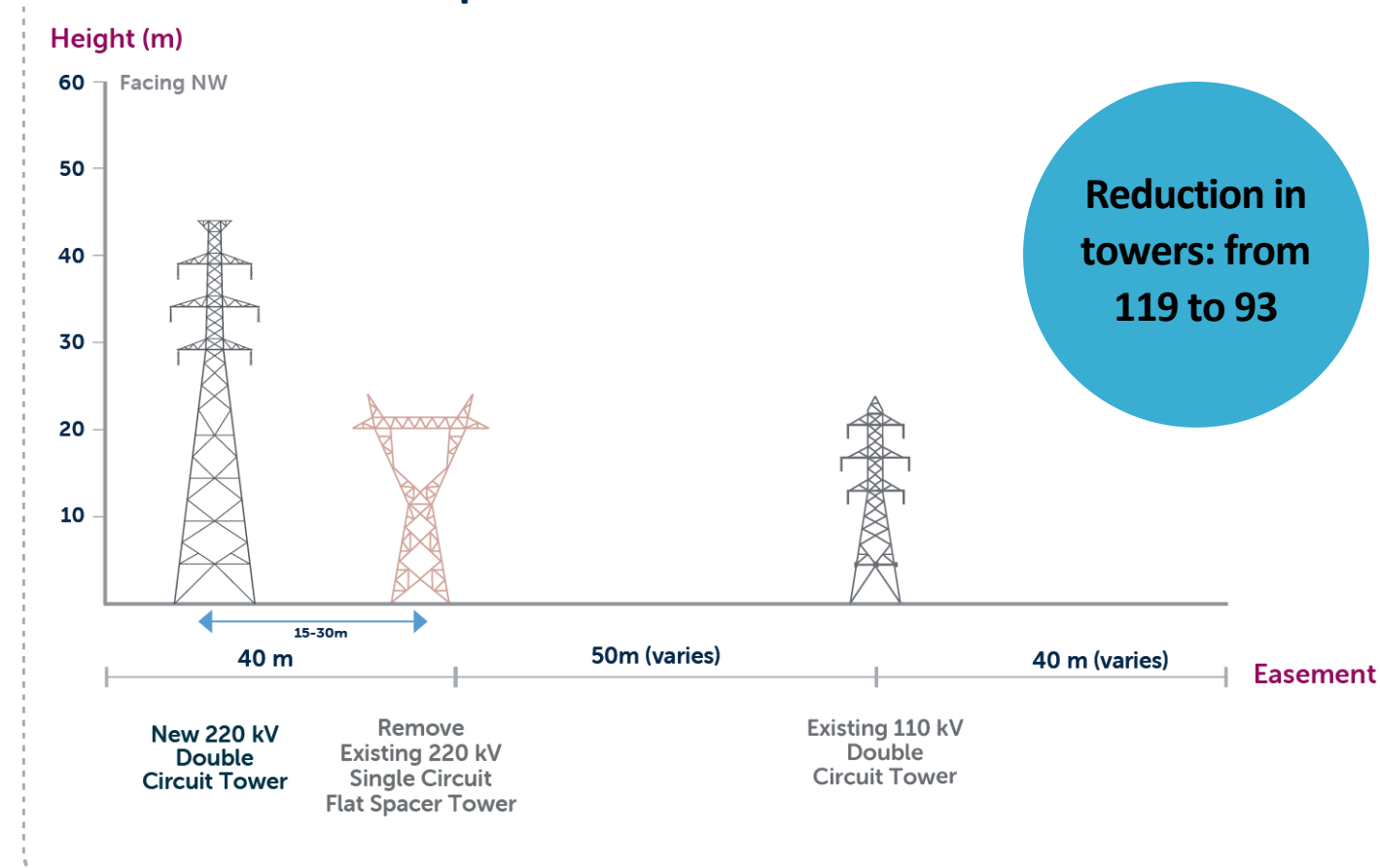
*Locations are approximate

*Tower designs and easements are indicative only and will vary depending on use, location, elevation and final technical design. Total number of towers: 490

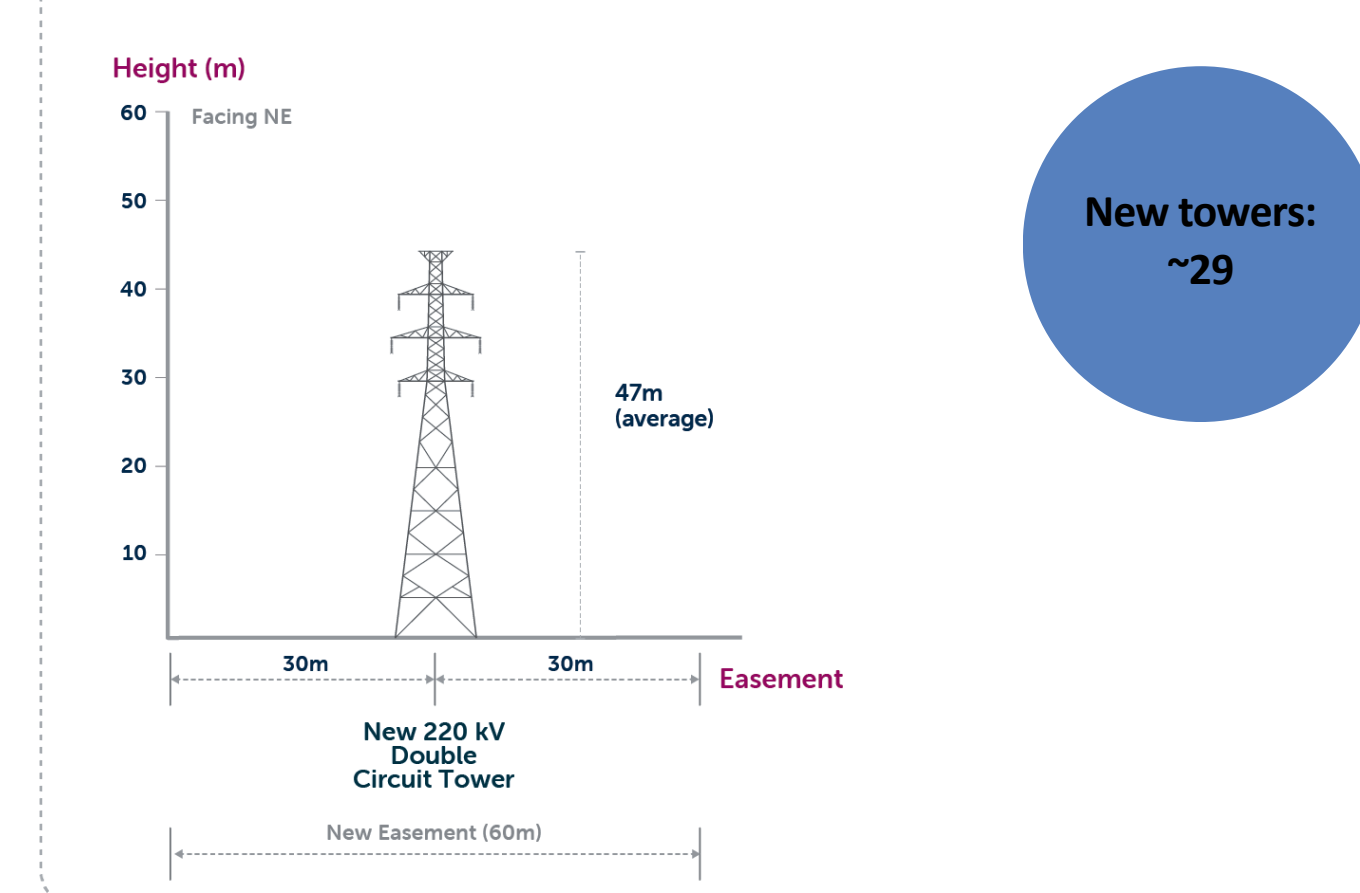
1. Palmerston to Sheffield



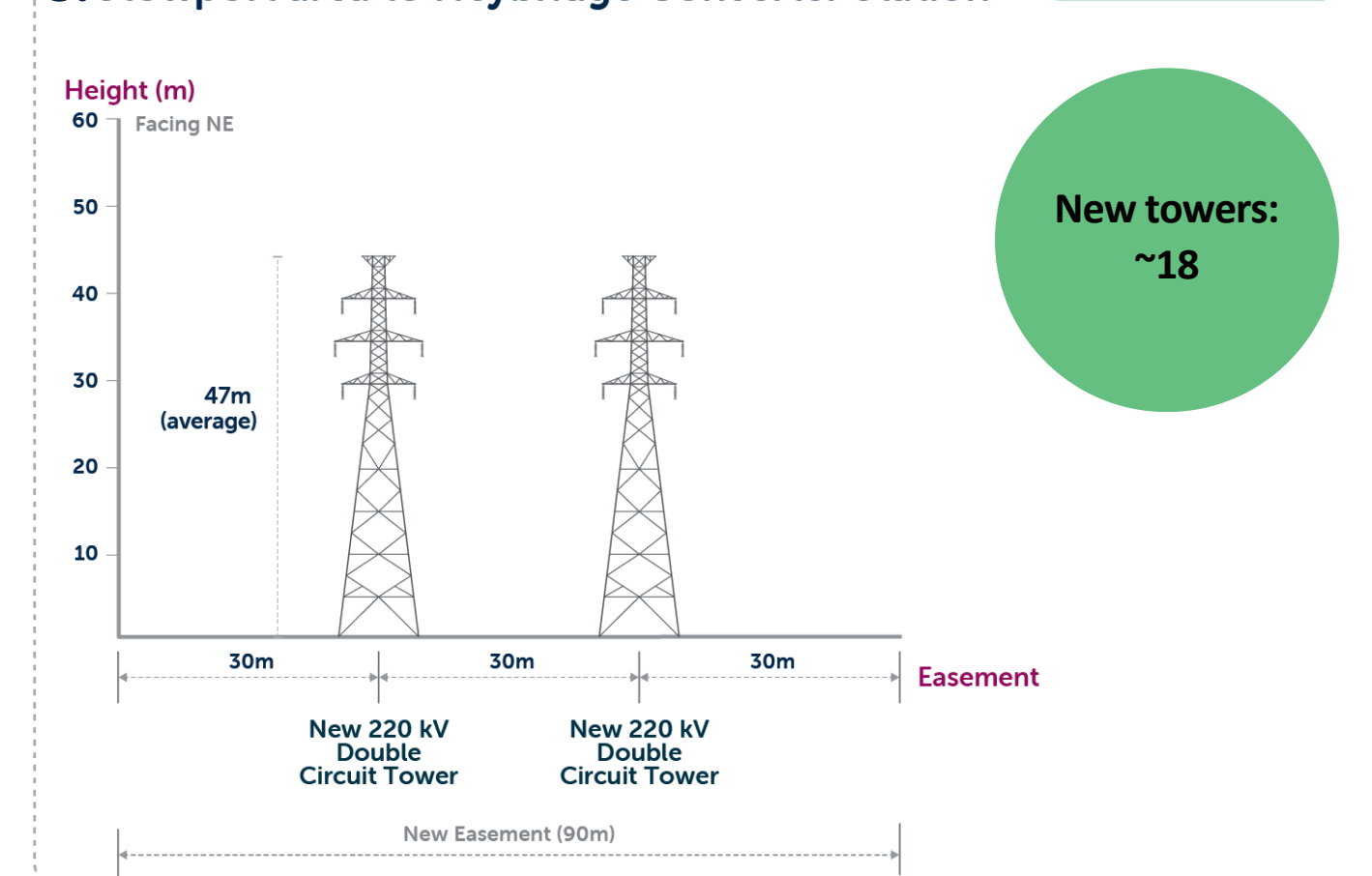
2. Sheffield to Stowport area



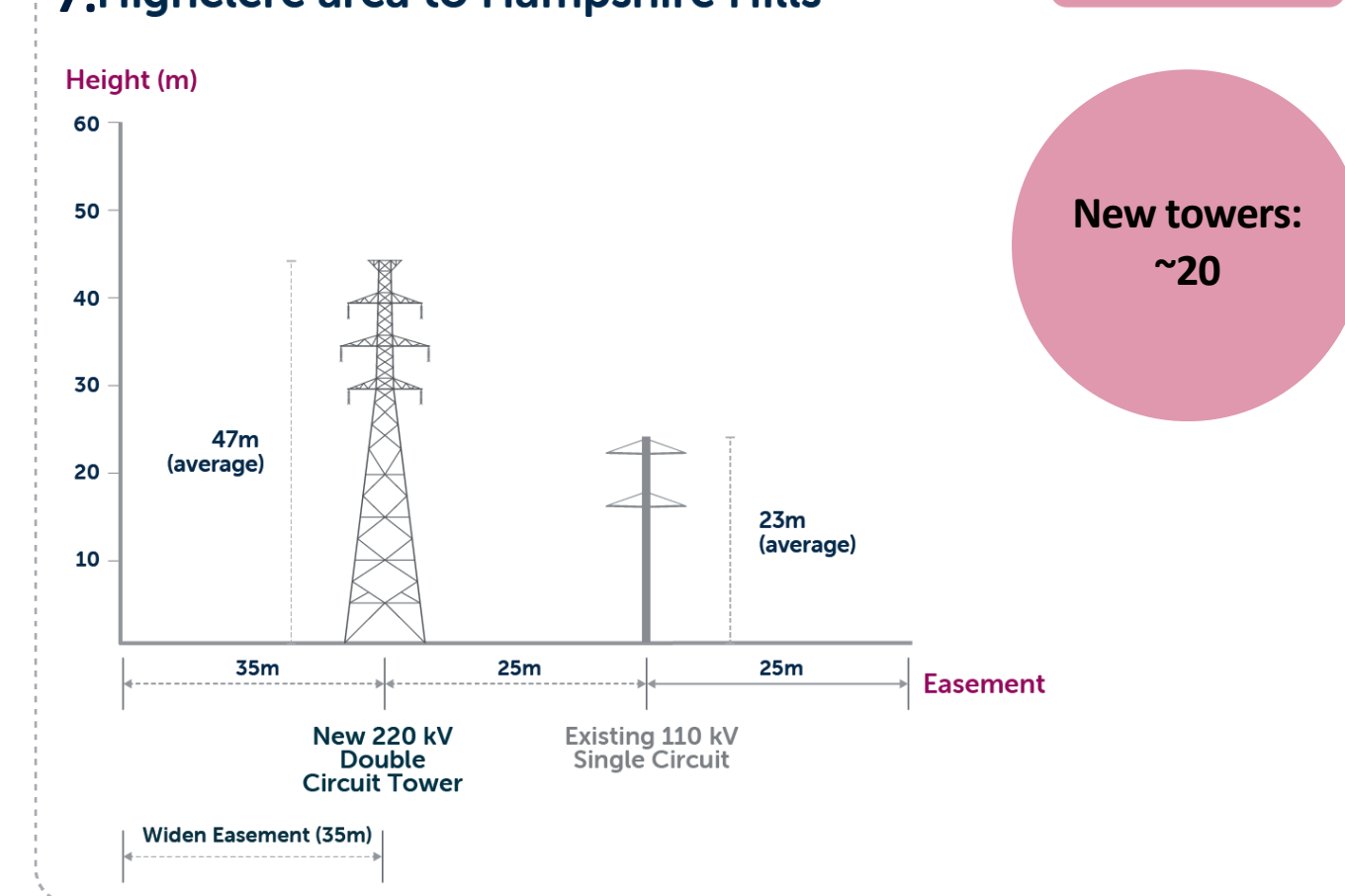
6. East Cam area to Highclere area



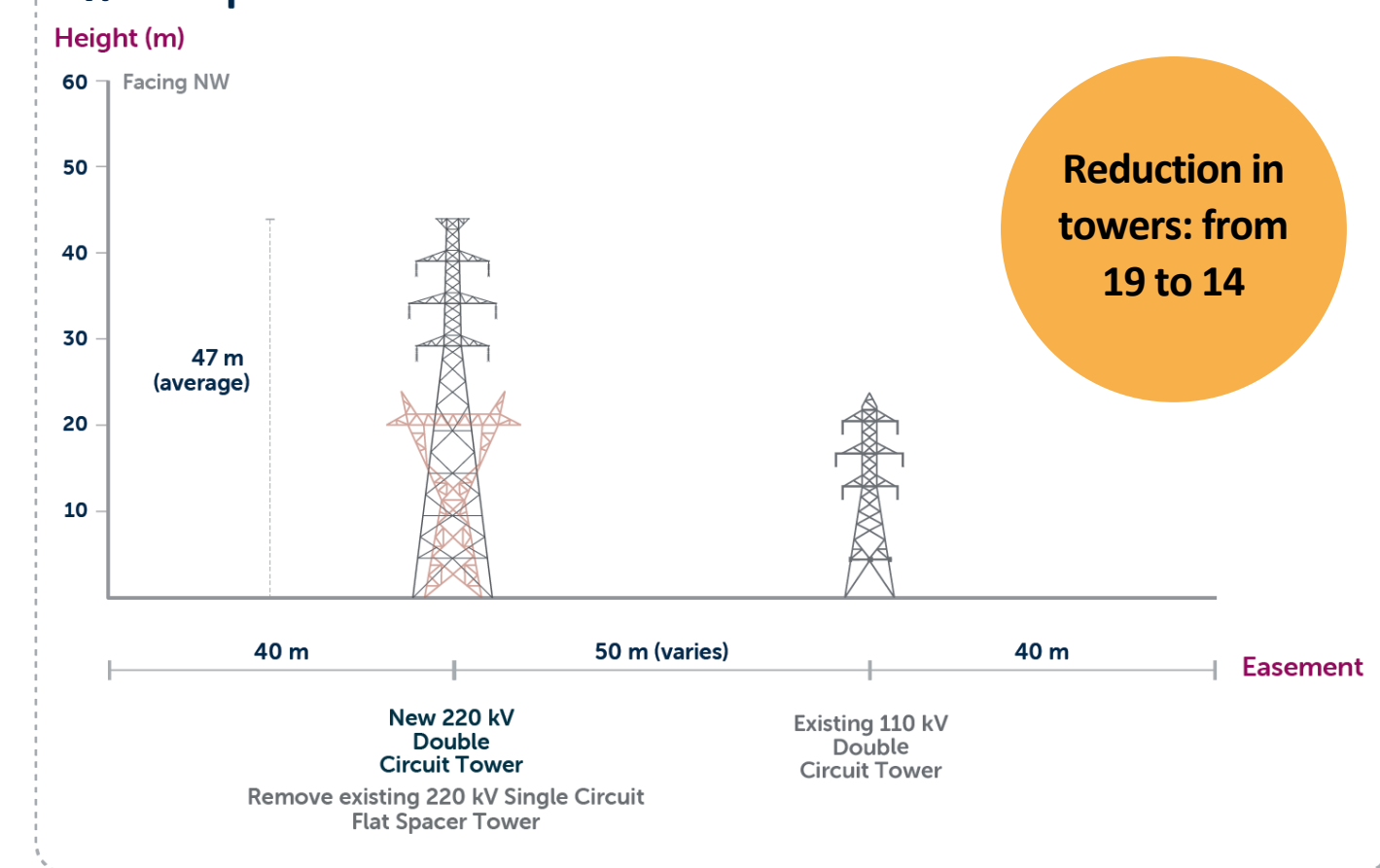
3. Stowport area to Heybridge Converter Station



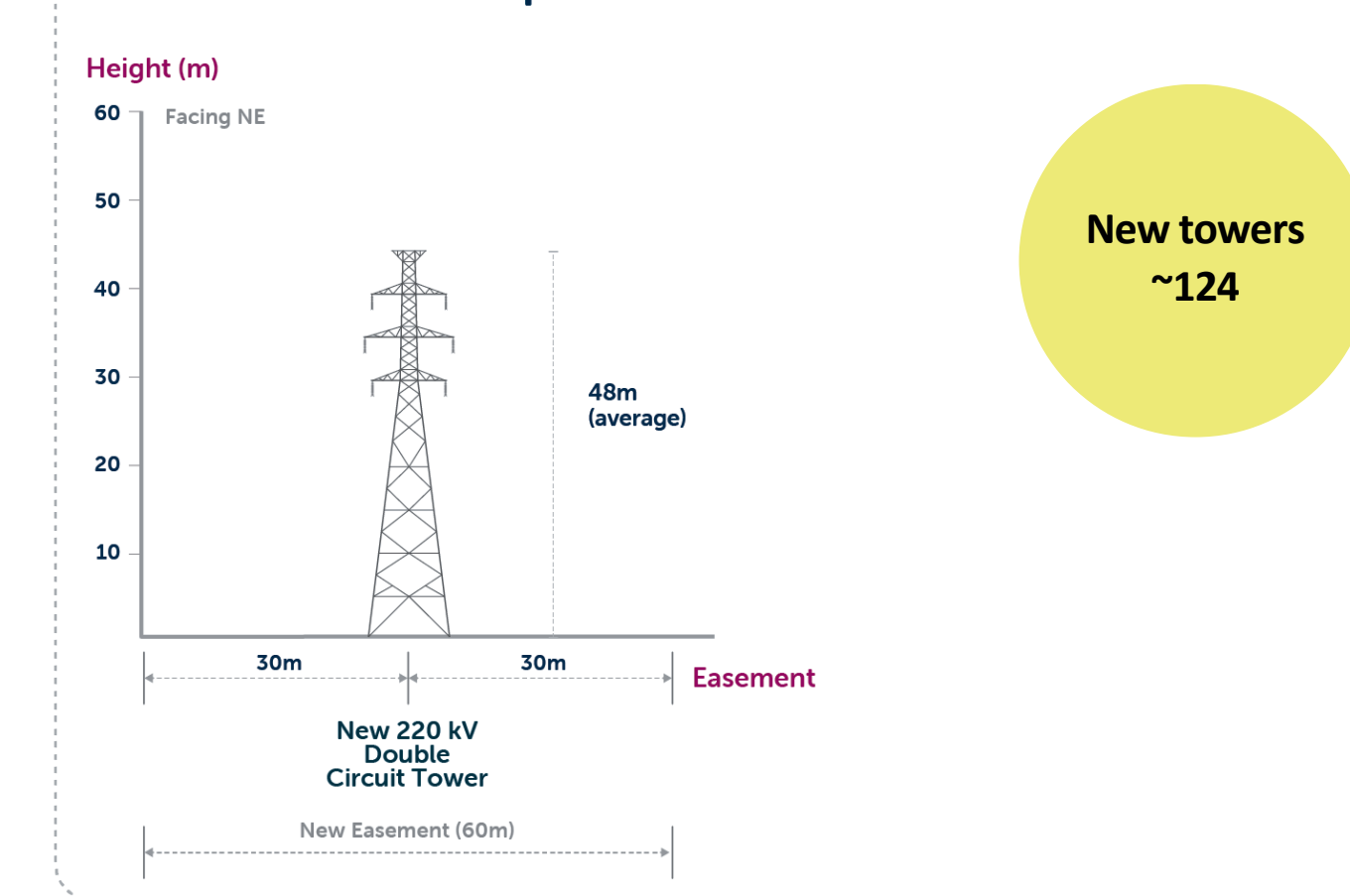
7. Highclere area to Hampshire Hills



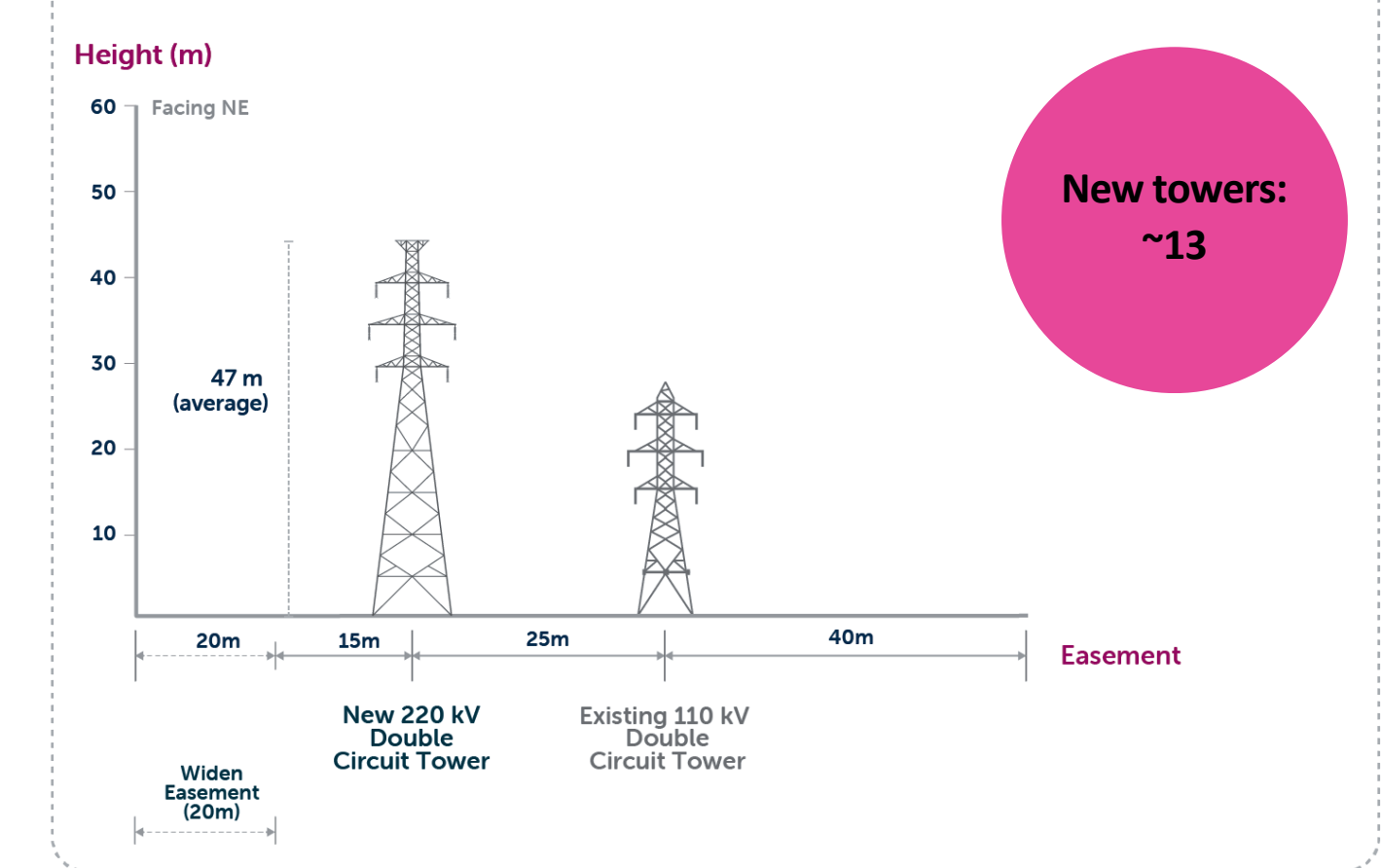
4. Stowport area to Burnie



8. Stawerton to Hampshire Hills



5. Burnie to East Cam area



9. Stawerton to Sheffield

