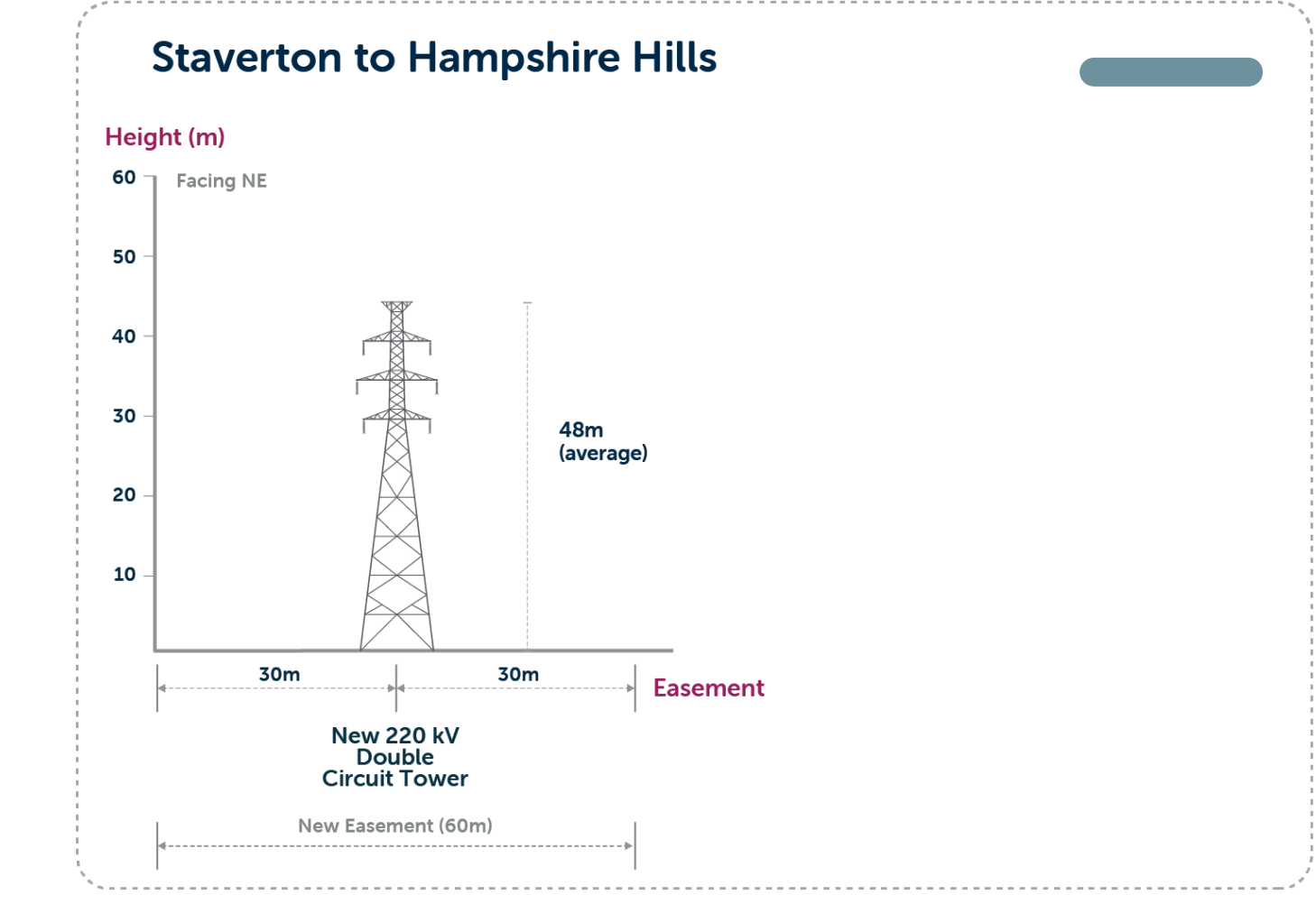
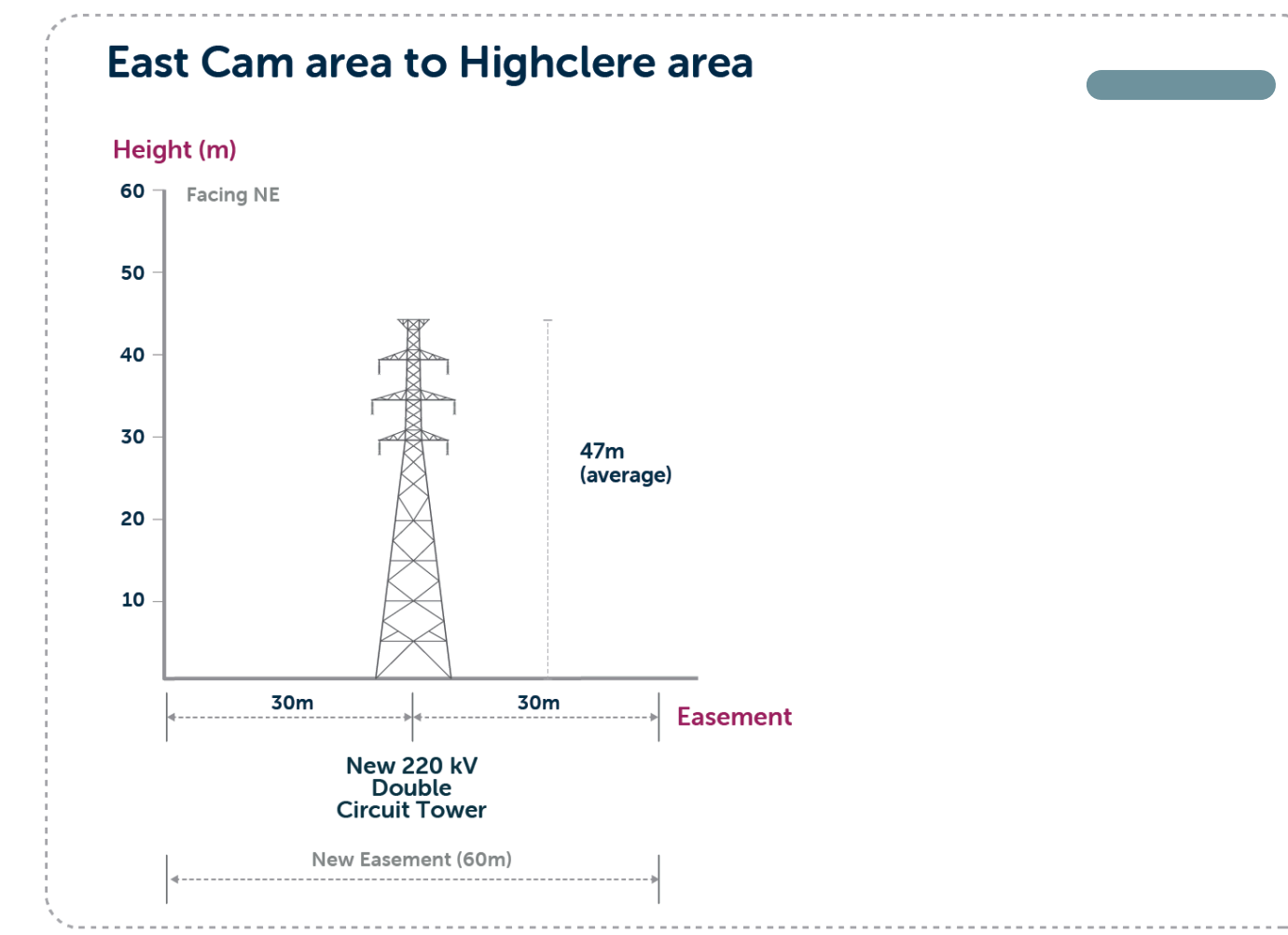
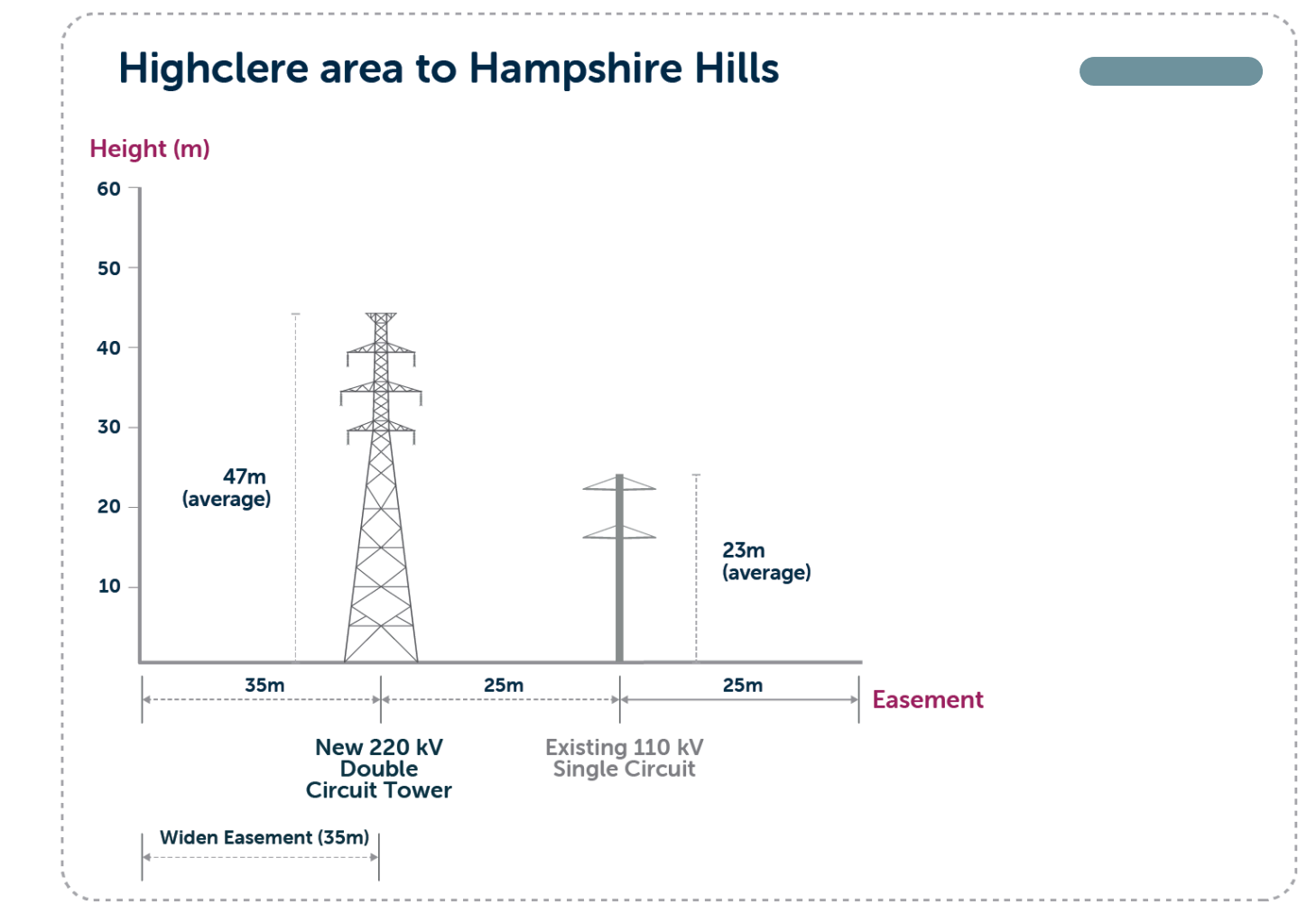
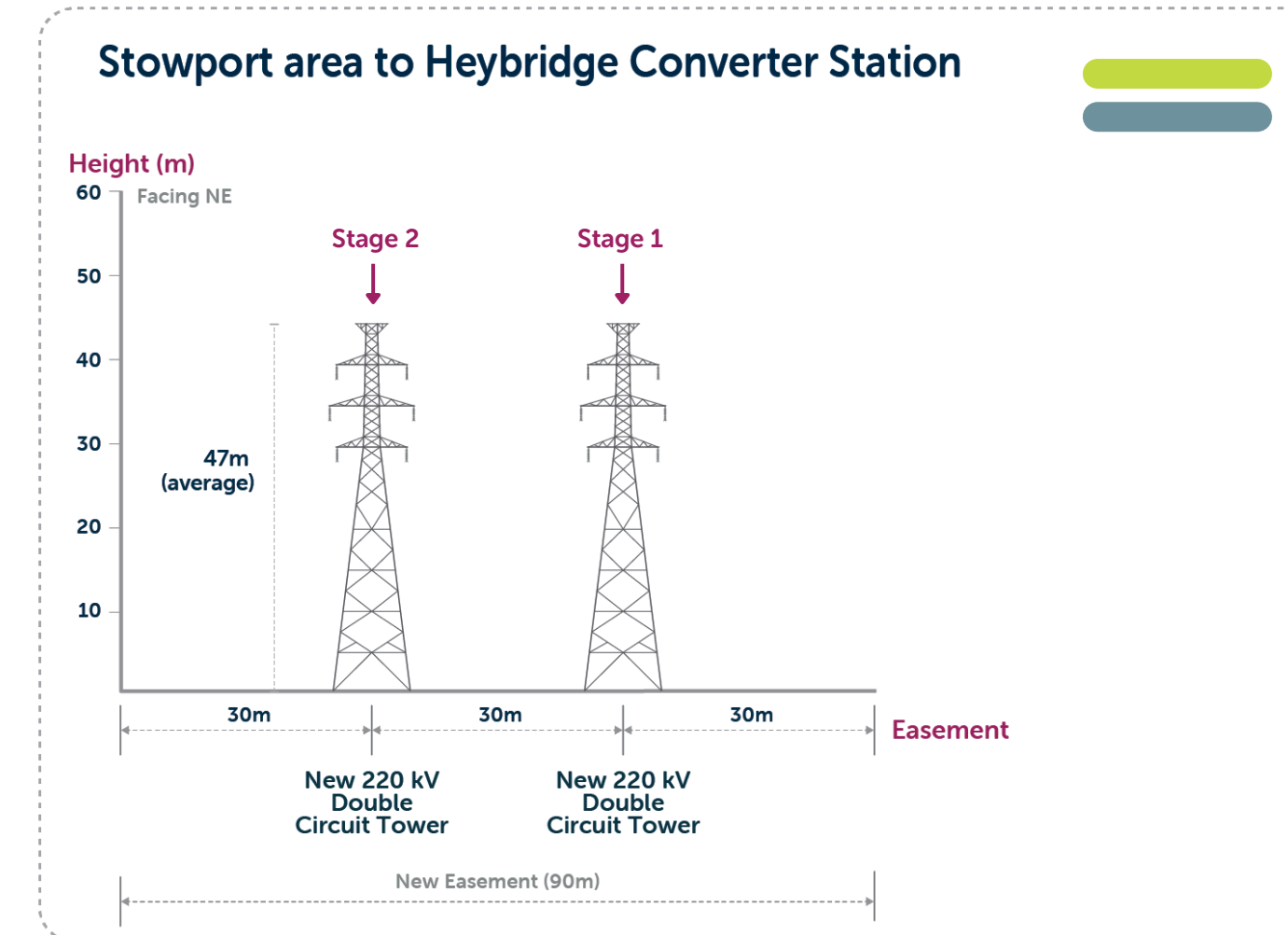
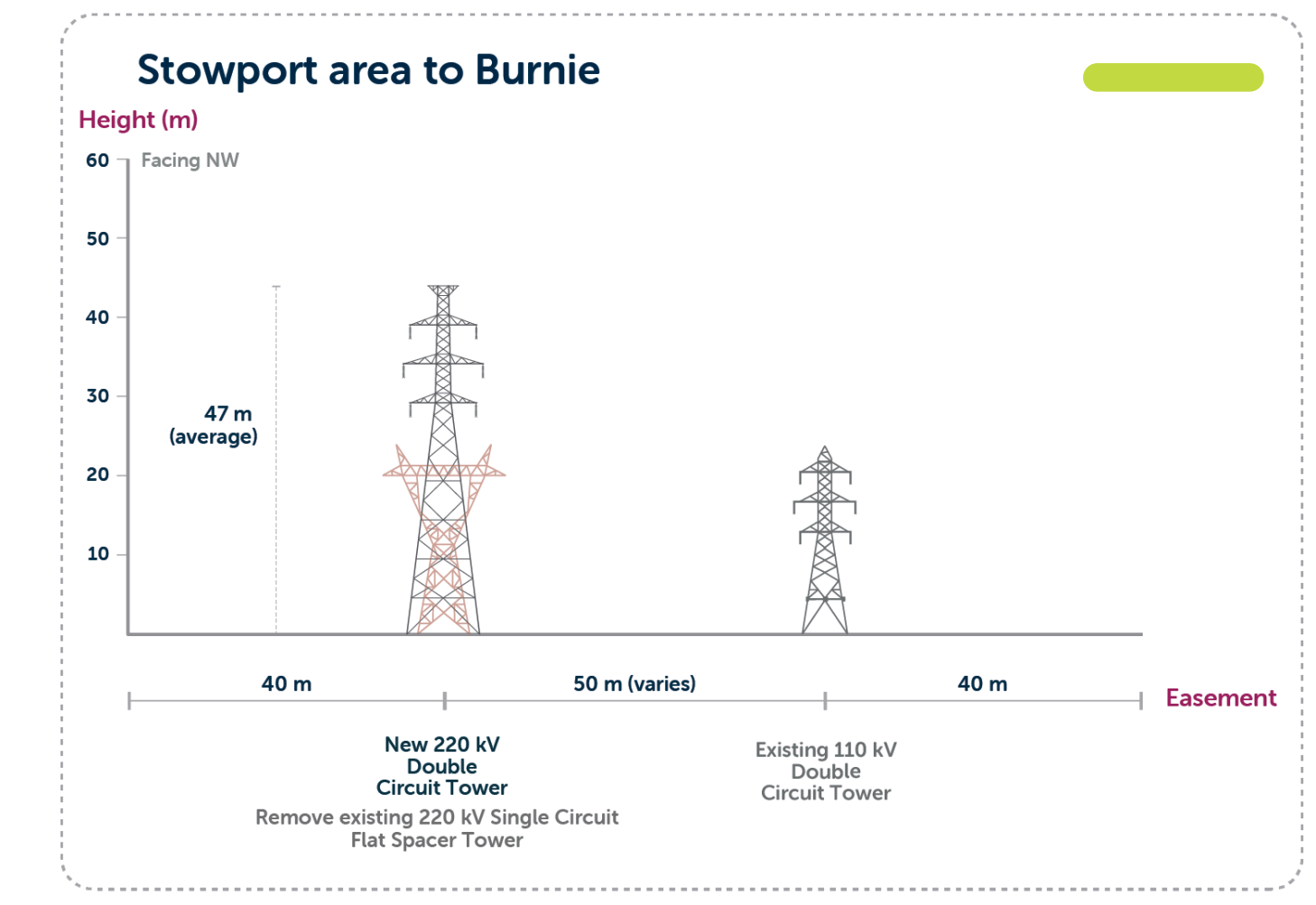
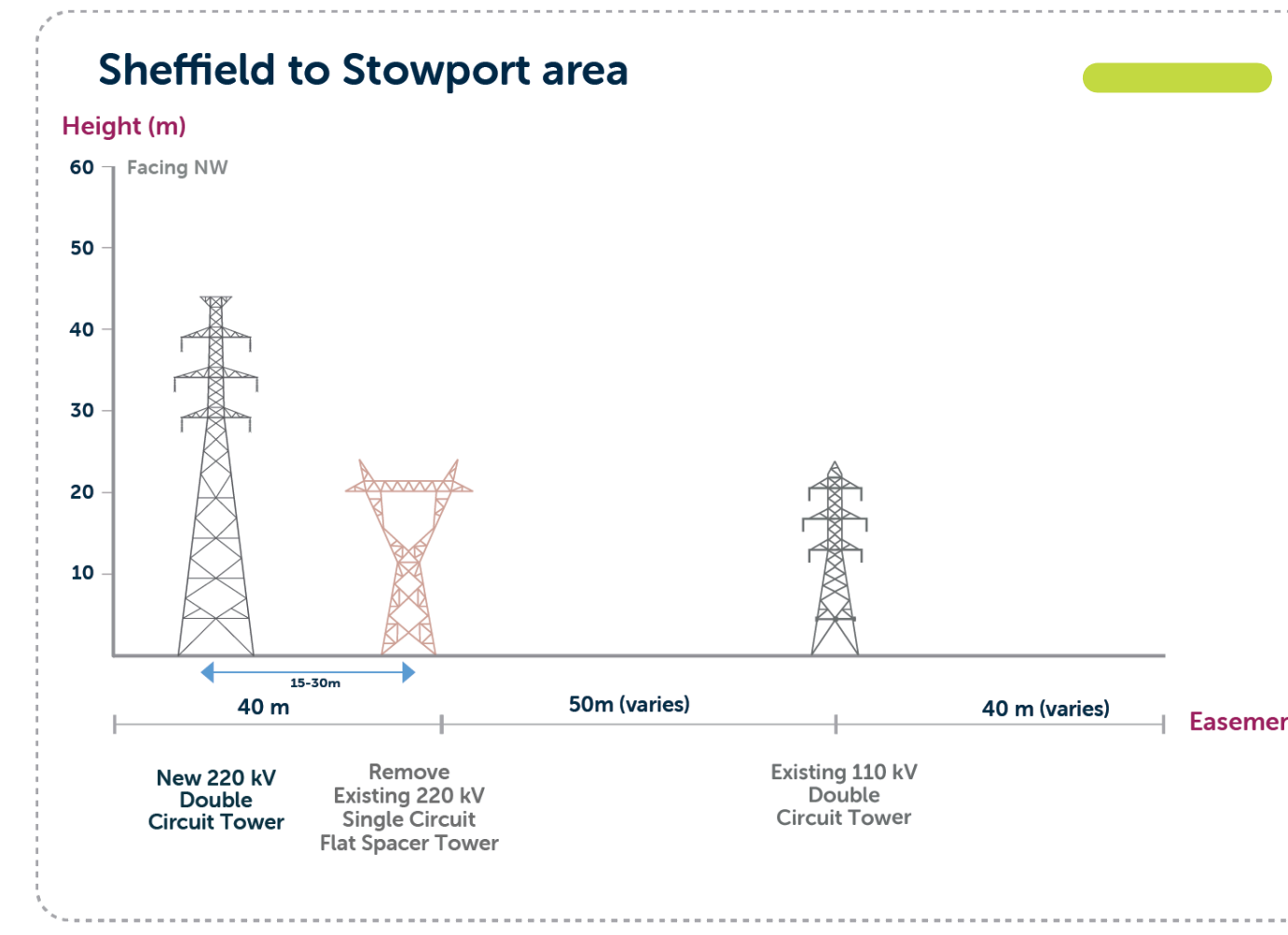
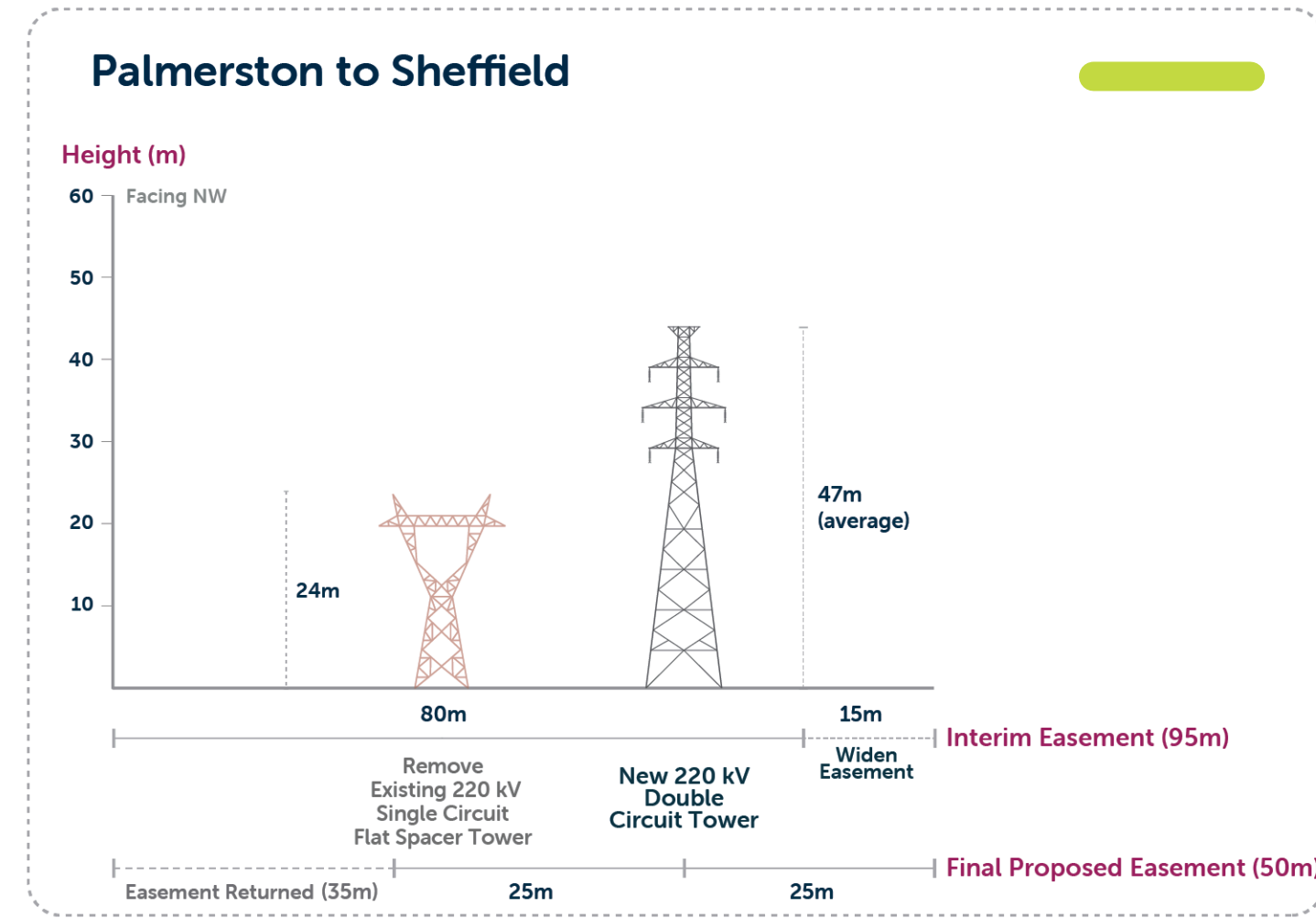
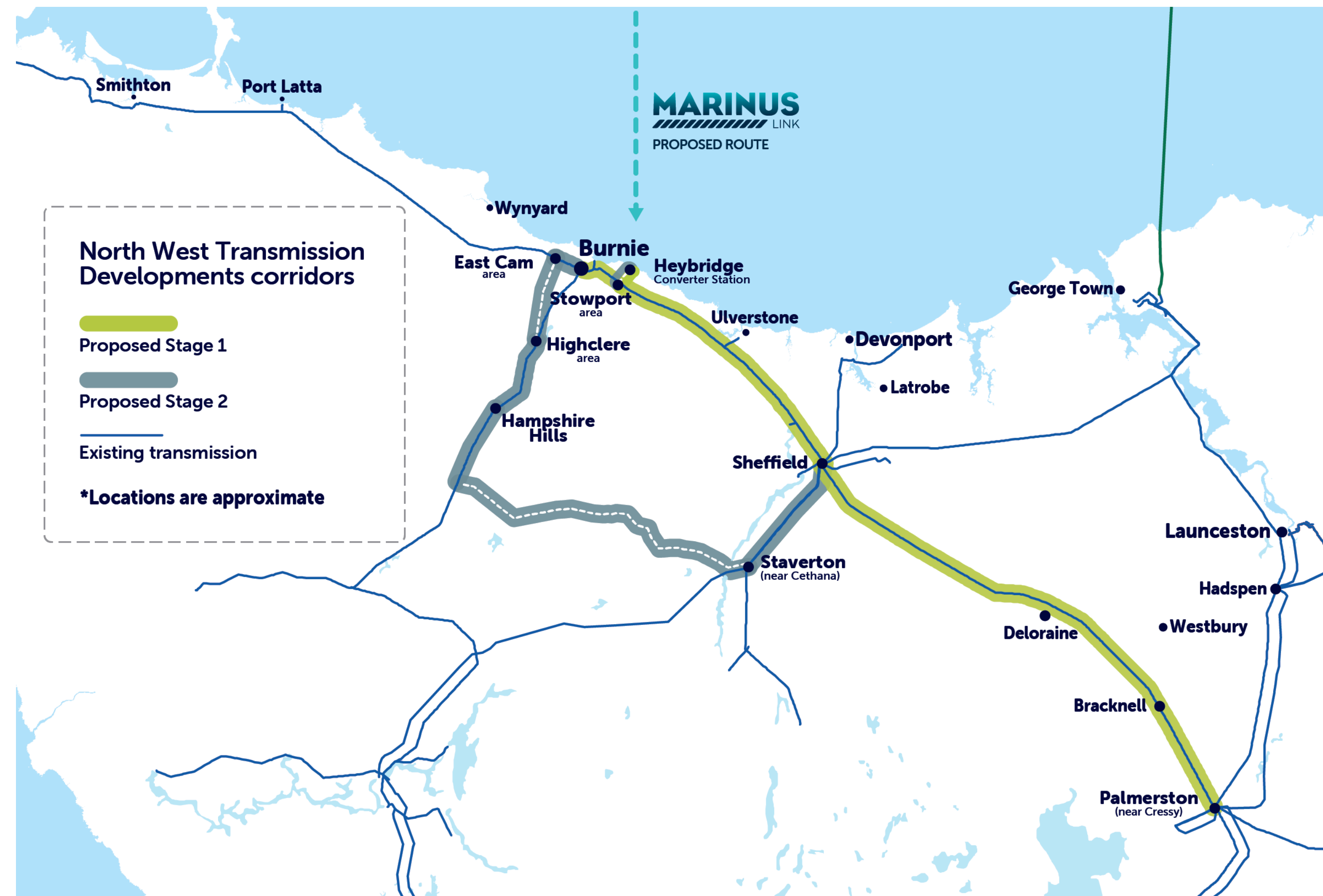


# North West Transmission Developments - Project staging



The North West Transmission Developments project will be delivered across two stages, with construction planned to commence in 2025-26 to align with construction of the first Marinus Link cable. Stage 2 will deliver the balance of the NWTD scope, which includes the section between Stawerton to Burnie via Hampshire Hills, to align with delivery of the second Marinus Link cable (subject to final approval).

This approach will see approximately 60 per cent of the NWTD built in the first stage. All stages of the project are subject to Development and Environmental Approvals and Final Investment Decision.

\*Tower designs and easements are indicative only and will vary depending on use, location, elevation and final technical design.

