

NWTD Stakeholder Liaison Group

3 December 2024

Today's agenda

- Round robin
- Economic Development
- Marinus Link update
- North West Renewable Energy Roundtable - Workforce
- NWTD update
- Community investment
- Infrastructure Sustainability Rating

Member round robin

Economic Development

Marinus Link update

Marinus Link – Status Update

✓ EIS Victoria EPA Process

- ✓ Public Panel Hearing completed – awaiting report to Minister

✓ Tasmania Enviro Approvals Process

- ✓ Public Exhibition - Jan / Feb 25'

✓ Balance of Works

- ✓ Pre-qualification process underway
- ✓ Meet the projects engagement – early 25'
- ✓ Preferred contractor – mid 25

✓ FID - mid 25'

Community Engagement – Oct to Nov

- Burnie Show
- Wynyard Tulip Festival
- Tas Beekeepers Association Market (Heybridge)
- Burnie City Market
- Wynyard Foreshore Market
- Jack Jumpers – Bass Strait Battle
- Bell Bay Major Projects Conference
- Burnie Tender Writing Workshops (2)
- Tasmania Community Update



Upcoming Community Engagement

➤ Illuminate New Years Eve 2024 – Burnie

➤ Tasmania Enviro Approvals Process

- Drop-ins / Webinars / Website / Advertising
 - Burnie, Wynyard, Heybridge, Future Energy Hub
- MLPL will be here in numbers - engagement, subject matter experts

➤ Activate Future Energy Hub



North West Renewable Energy Roundtable - Workforce

NW Renewables Roundtable

Overview



Collaboration between;

- Clean Energy Tasmania (CET),
- Advance West North West (AWNW) and
- Cradle Coast Authority (CCA).

The purpose of the Roundtable is to identify areas where real outcomes can be progressed through collaboration.

NW Renewables Roundtable

Workforce Focus



Skills Tasmania:

- Workforce projections data
- NW Renewables Training Centre
- Skills and workforce mapping

Cradle Coast Authority

- Clean Energy Education Precinct

NW Renewables Roundtable

Workforce Focus

- Workforce data and mapping
- Skills pathways to promote workforce agility
- Cumulative impact assessment including labour and accommodation requirements
- Develop a central workforce and construction portal that can be updated online

NW Renewables Roundtable

Questions included

- Do we need to develop a pool of people that can be recruited from – GTO?
- How do we stop unhealthy competition between employers?
- How do we incentivise industry to supply teachers?
- Is workforce development for wind energy behind due to a lack of a peak body?
- What can be done to provide better pathways to recognise the skills of migrants?

Clean Energy Education Precinct

- Explore the possibility of establishing an integrated ecosystem of education providers, through a hub and spoke model.
- Activate our hard and soft education and workforce infrastructure to be sustainable, dynamic, integrated and responsive to the needs of community and industry.
- Leverage the Study Hub network, Trade Training Centres, regional schools and other educational institutions that may benefit from a collaborative, coordinated and consistent approach.

Clean Energy Education Precinct





CRADLE COAST
A U T H O R I T Y

Stronger Councils, **Stronger** Region

Thank you

vterry@cradlecoast.com

NWTD update

Key milestones

Milestone	Estimated date
Appointment of Head Contractor	December 2024
AER CPA 1 Determination (earliest)	December 2024
Lodge Environmental and Planning approvals with Tasmanian Planning Commission	March 2025
Community Engagement on Environmental and Planning approvals (ahead of public exhibition)	March / April 2025
Final Investment Decision (FID)	May 2025
Submission of CPA 2	By August 2025
Construction commences	2026

Recent community engagement

- Tulip Festival, Wynyard, Sat 12 Oct
- Tasmanian Craft Fair, Deloraine, Fri 1 Nov to Sun 3 Nov
- Taste of the North West, Sheffield, Sat 9 Nov

Upcoming

- Mole Creek Pool re-opening, Sat 7 Dec



Community investment

Previous investments

NWTD has supported a number of Kentish House's ongoing programs and a new addition for the Access 2 Health Service Project, they include:

- Upgrade of the toys at playgroup, with a focus on increasing sensory / messy-based play.
- Grow the edible garden used to assist a number of initiatives and to purchase a garden shed to house outdoor toys. This initiative was also supported by the local Men's Shed who helped assemble the shed recently (pictures).
- Six months of advertising in *The Kentish Voice* to place a Kentish Health Services Listing in collaboration with the Access 2 Health Services Regional Project for those services to be better utilised and patients better serviced.



Kentish House expands services through funding

Kentish House works closely with community members and local service providers, with all programs and services tailored to meet the needs of the Kentish Community and funded solely by grants and donations. Some of the services offered include: playgroup, links and referrals to other services, parenting programs and workshops, emergency relief and youth activities. TasNetworks recently provided funding to support a number of Kentish House's ongoing programs, and a new addition for the Access 2 Health Services Project.

Chris Warr (Leader Major Projects Engagement, TasNetworks) says, "TasNetworks recognises the critical role that community organisations like Kentish House play in creating a positive difference in the lives of Tasmanians. Supporting these initiatives was an easy decision with a key community facility enhanced, making it more accessible for everyone to enjoy and providing long-lasting benefits."

"By providing this support we aim to help build local resilience, encourage strong social connections and prioritise the health and wellbeing of rural communities."

The TasNetworks funding has allowed Kentish House to:

- upgrade the toys at Playgroup, with a focus on increasing messy-based play. Playgroup is open to those with a child/ren in their care aged 0-5 years of age. It runs from 9am-11am every Tuesday (during school term) at Kentish House. No need to RSVP - just turn up ready to have fun!
- grow the edible garden used to assist the Cooking Group in reducing ingredient costs, providing food for those in need, and teaching Playgroup children where food comes from and to assist in building a garden shed that will be used to house outdoor toys. Cooking Group is held every week on Wednesdays (during school term) with a focus on creating healthy food meals. Currently at capacity, please contact Cassandra on 0447 325 343 to register your interest.
- begin a 6-month trial in *The Kentish Voice* to place a Kentish Health Services Listing, in collaboration with the Access 2 Health Services Regional Project.

Recent consultation by the A2HS Regional Project with both our community members and service organisations shows that existing health services could be better utilised and literacy better serviced with increased health promotion and literacy.

The monthly Kentish Health Services Listing will be trialled from August 2024 to January 2025 in *The Kentish Voice* and aims to cover Kentish-based health services/sessions/groups. Please contact Ruby on 0497 780 216 if there is a listing missing from the August edition that you think may be relevant.

The Hub has generously donated \$10,000 to Kentish House to help cover the ongoing costs of our programs, as well as to purchase a suitable shed (that the Kentish Men's Shed has offered to install for free!) and appropriate furniture to create a welcoming and sensory-friendly space.

We deeply appreciate the ongoing support from The Hub and the Kentish Men's Shed. It is an honour to have such generous and dedicated organisations in our local community, and we are extremely fortunate to have them.

If there is a program, you believe would be beneficial to the community or an item you feel would make Kentish House more comfortable, please contact Cassandra on 0447 325 343.

Kentish Voice, August 2024

RAW partnership

As part of NWTD's partnership arrangements, RAW committed to offering four self-care workshops to the NW community.

- Wreath Making, Cressy, 21 Aug
- Line Dancing, Wilmot, 11 Oct
- Paint and Sip, Roland, 22 Oct
- Hoedown, Hagley, 7 Dec

"We had 50 people in attendance and lots of fun was had by all. RAW delivered a chat about the importance of community connections and having fun and thanked TasNetworks for funding these amazing self-care events. There were a lot of laughs, and much fun had throughout the evening."

- Sallyann Harper, Communications & Events Officer, RAW Tas



Infrastructure Sustainability Rating

Agenda

1. What is sustainability?
2. Sustainability at TasNetworks
3. Impacts of infrastructure
4. Infrastructure sustainability
5. The Infrastructure Sustainability Council (ISC) and the Rating Scheme



What is sustainability?

Sustainability is defined as “meeting the needs of the present without compromising the ability of future generations to meet their own needs” (United Nations Brundtland Commission, 1987).

Sustainable Development Goals

There are 17 Sustainable Development Goals (SDGs) which provide a “shared blueprint for peace and prosperity for people and the planet, now and into the future” (United Nations).



Sustainability at TasNetworks

TasNetworks acknowledge our interconnectedness with the community, the economy, and the environment.

TasNetworks Environment and Sustainability Policy



Environment and Sustainability Policy | TasNetworks | Powering a Bright Future

TasNetworks is committed to safely delivering electricity and telecommunication network services, creating value for our customers, our owners and our communities in which we work. Our vision is to be trusted by our customers to deliver today and create a better tomorrow.

To support our vision and commitment to the protection of the environment, we play an active role in the promotion of environmental and cultural heritage values. We seek to embed environmentally sustainable practices across our entire business and align with the United Nations Sustainable Development Goals.

Our Environment and Sustainability Goal is to minimise the impact of our activities on the environment and cultural heritage. To achieve this, we commit to work together to:

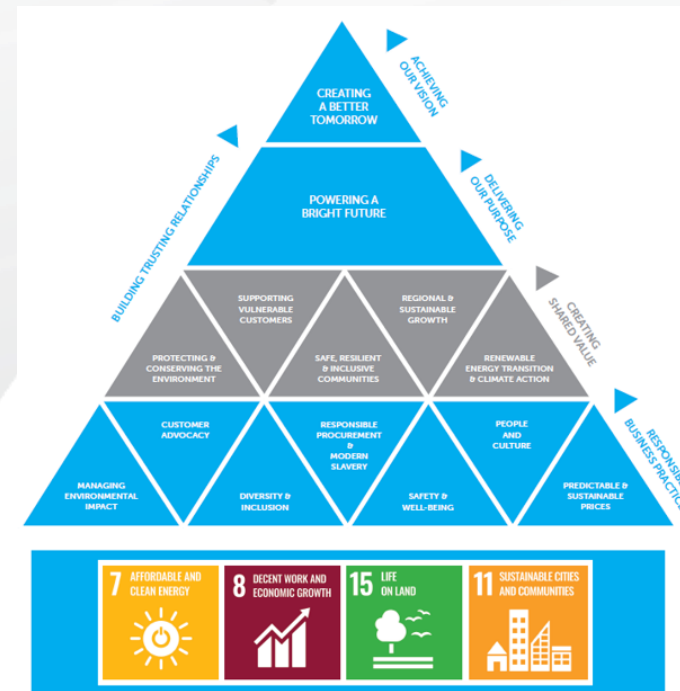
- proactively identify and manage environmental and cultural heritage risks throughout the life cycle of our assets and activities.
- ensure our systems and processes enable compliance with applicable statutory obligations, standards, codes of practices and other regulatory requirements.
- set and regularly review objectives and targets which drive improved environmental performance and maturity.
- ensure our team members are adequately aware, consulted, trained and competent to meet the requirements of this policy and the Integrated Management System.
- empower our people to make responsible choices and to prevent, intervene or stop activities with the potential to have adverse environmental or cultural heritage impacts, until effective controls are in place.
- monitor, review and report our environmental performance and adjust our systems and processes accordingly to ensure continuous improvement.
- strive to be environmentally sustainable by seeking out, identifying and implementing opportunities that create value by integrating sustainability principles into our activities over the entire life cycle.

Seán Mc Goldrick
Chief Executive Officer

Roger Gill
Chairman

31 March 2023

TasNetworks Sustainability Framework



NWTD Project Sustainability

Biodiversity



Climate
Resilience



GHG Emissions



Indigenous
Participation



environmental
management



landscape &
visual amenity



Stakeholder
engagement



Diversity, Equity
& Inclusion



Local
Employment



sustainable
procurement



Environmental impacts of infrastructure

70%

Of Australia's total emissions are either directly attributable to, or influenced by, how we build and use infrastructure.

The impacts of concrete

If the global cement industry were a country, it would be the 4th largest emitter in the world (CSIRO).

Most emissions come from producing 'clinker' by heating raw materials such as limestone for cement.

cement + water + sand + aggregates = concrete

sustainable solutions!

A portion of the 'clinker' in cement can be replaced with more sustainable options including industrial waste such as fly ash.

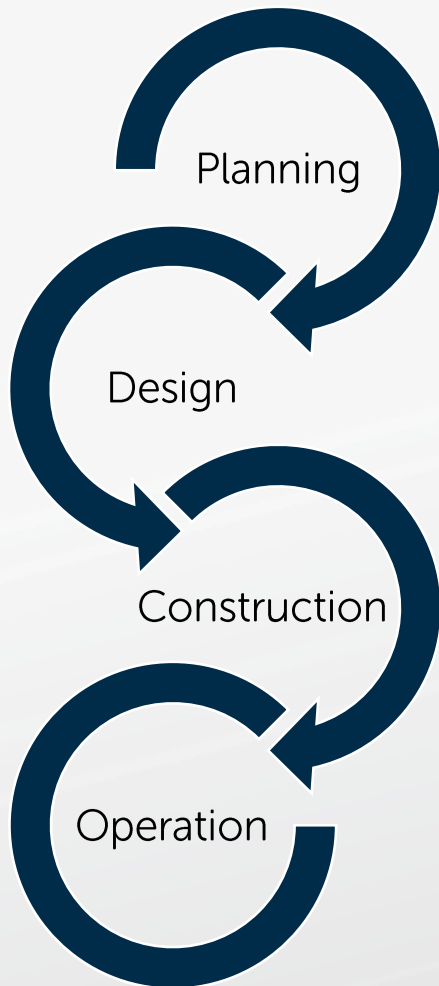
What is infrastructure sustainability?

“Infrastructure sustainability is when infrastructure has been planned, designed, constructed and operated to meet the needs of society without compromising the needs of future generations, while enhancing our environment and economy” (ISC 2021).

Intergenerational equity



What is infrastructure sustainability?



Sustainability needs to be implemented during all phases of a project

Building for value

Whole of life costs & benefits

Whole of life design initiatives

What is infrastructure sustainability?

Quantitative
Measures

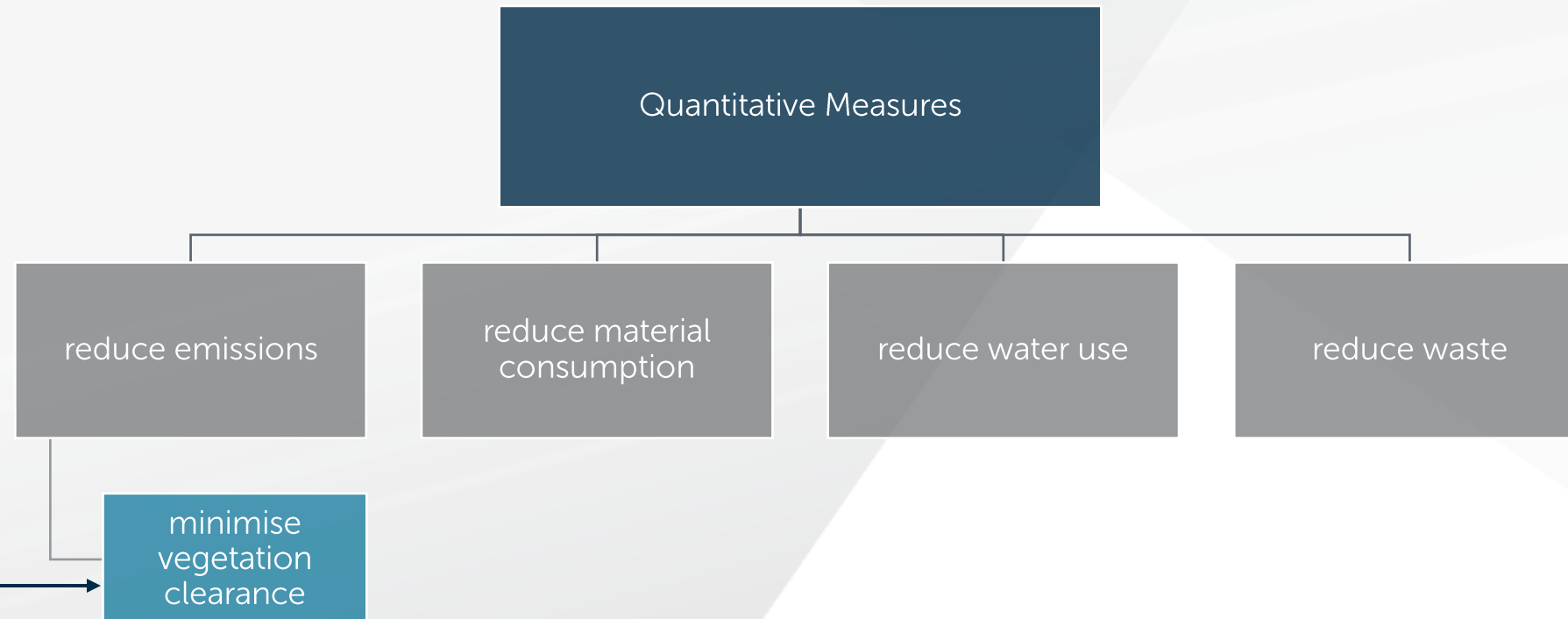
&

Qualitative
Measures

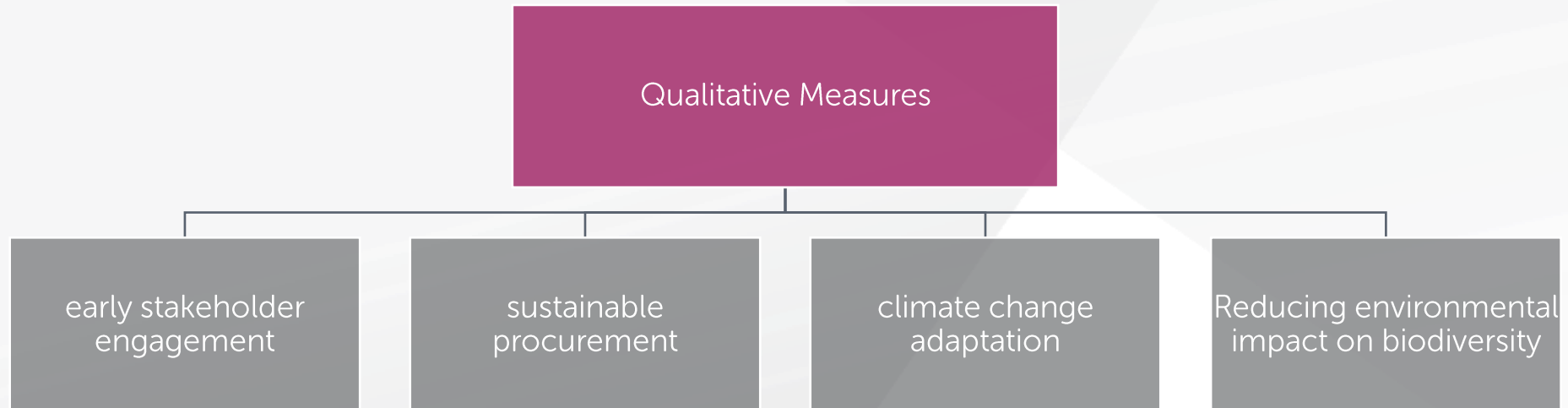
Measuring our inputs &
outputs to reduce our impacts

Determining & understanding
our wider impacts

What is infrastructure sustainability?



What is infrastructure sustainability?



Infrastructure Sustainability Council (ISC)

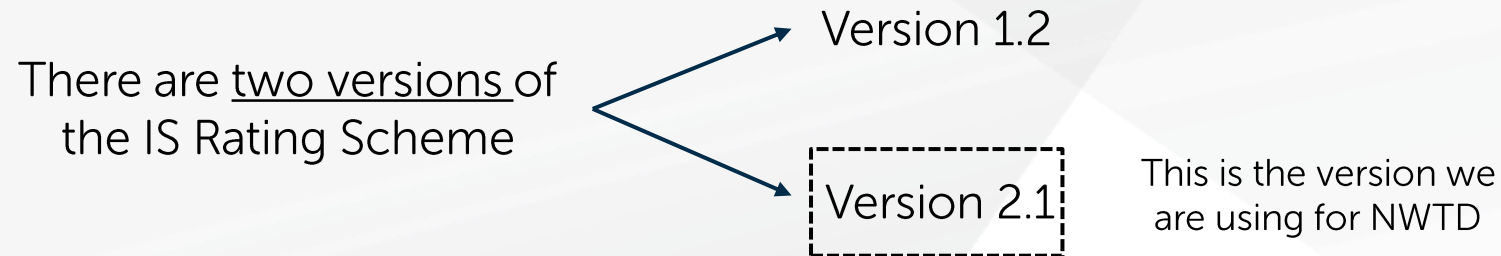
The Infrastructure Sustainability Council (ISC) is a member-based, not-for-profit industry association operating in Australia and New Zealand.



The ISC have created the Infrastructure Sustainability (IS) Rating Scheme.

The IS Rating Scheme

The IS Rating Scheme is an assessment tool used to evaluate the sustainability performance of horizontal infrastructure.



217 Certified Ratings in Australia

NWTD project Firsts

One of the first projects in Tasmania to undertake an IS Rating

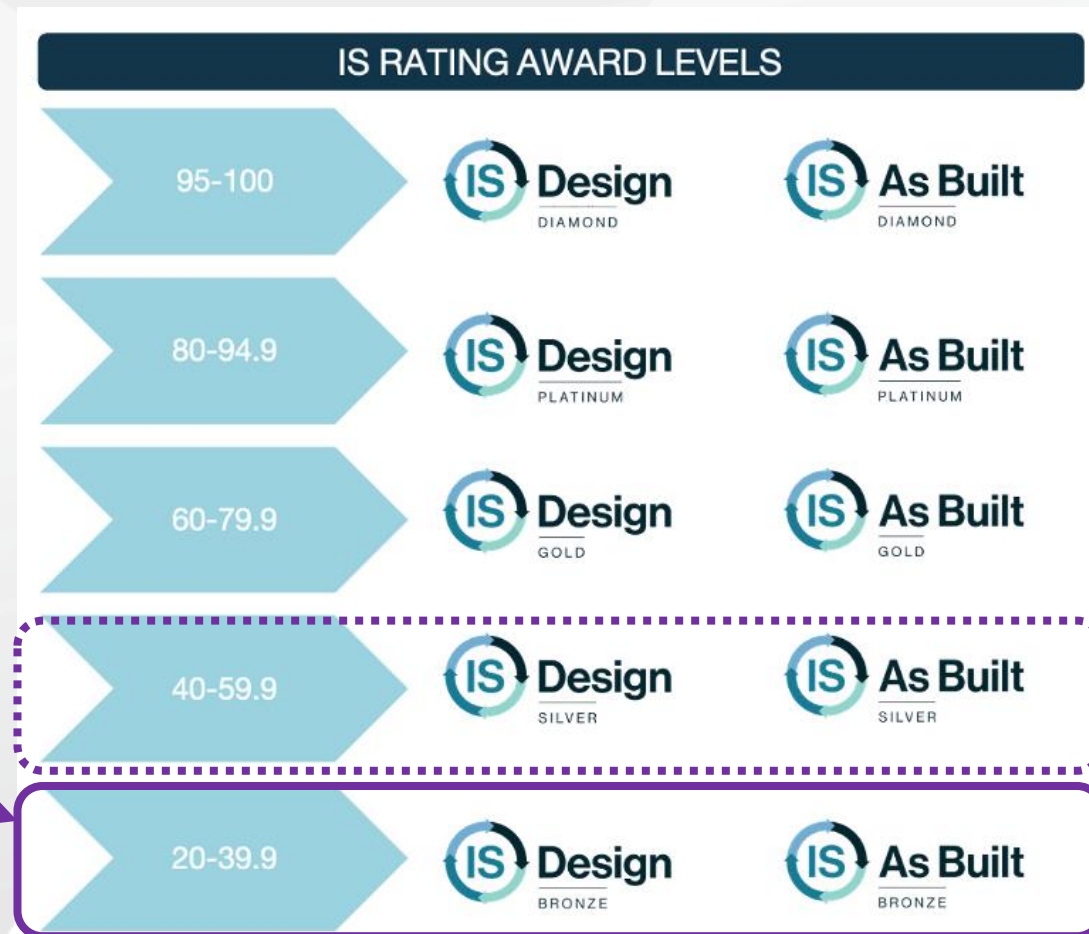
One of the first energy projects in Australia to undertake an IS Rating under v2.1

IS Rating Scheme – Award levels

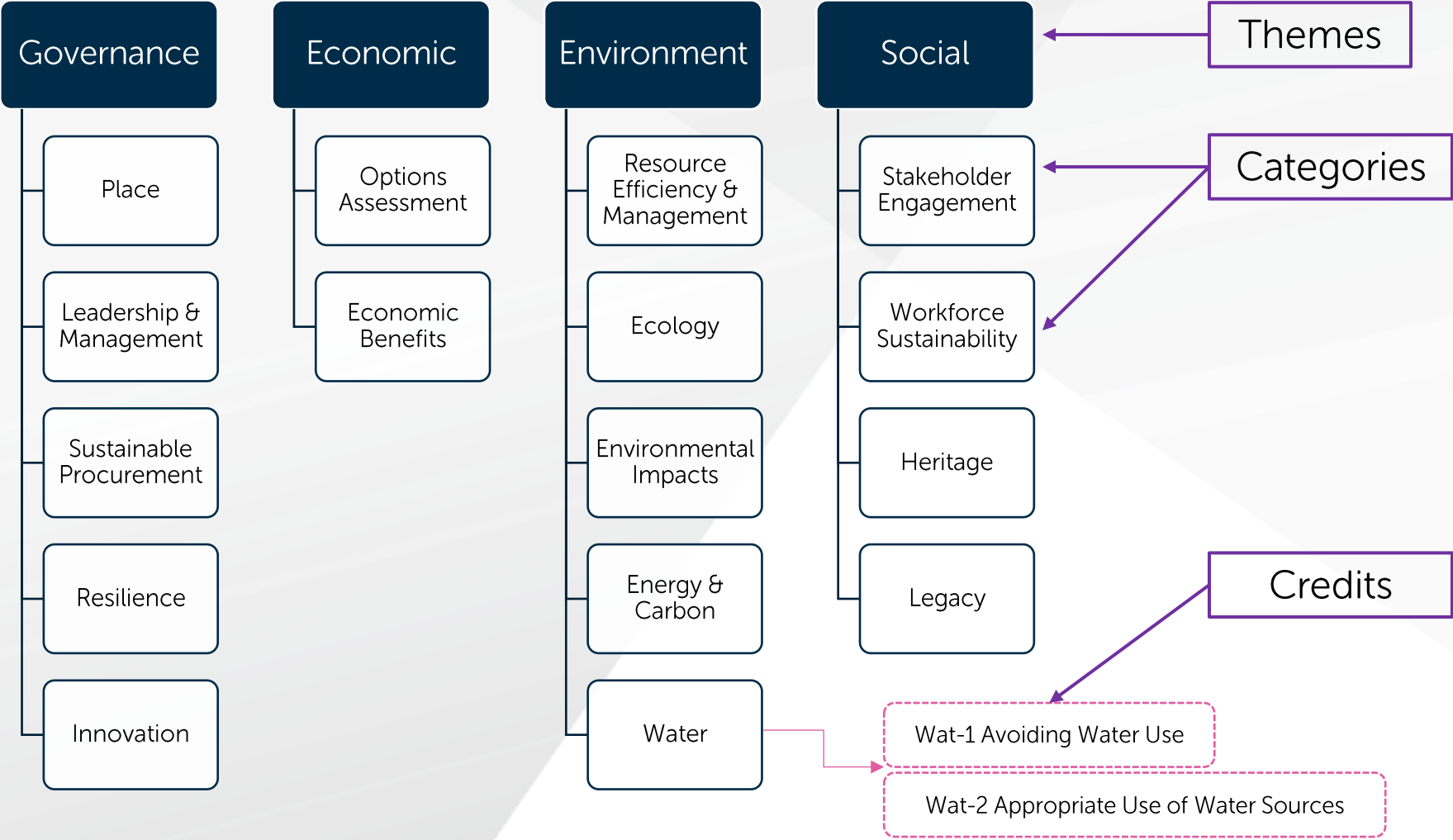
A project is rated out of 100 points, with 10 bonus points available for innovation.



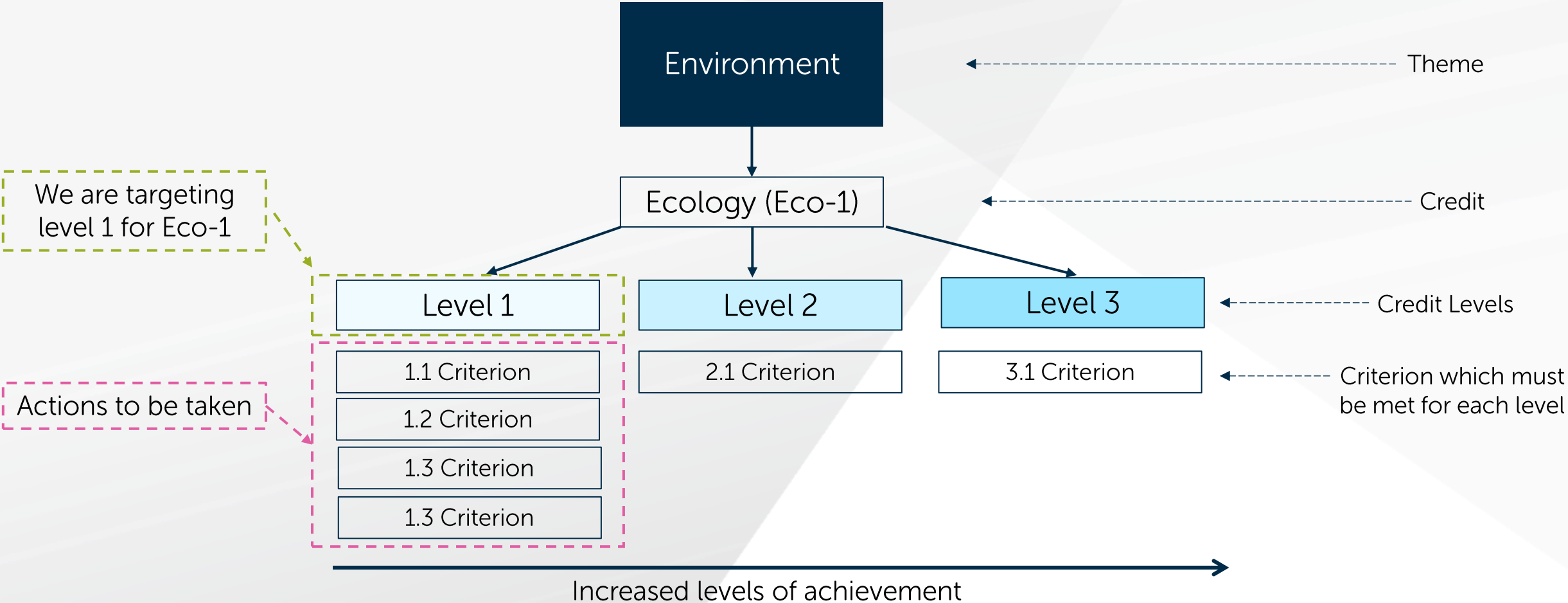
TasNetworks are aiming to achieve a v2.1 Bronze Rating for both Design and As Built.



How IS Ratings work



How IS Ratings work

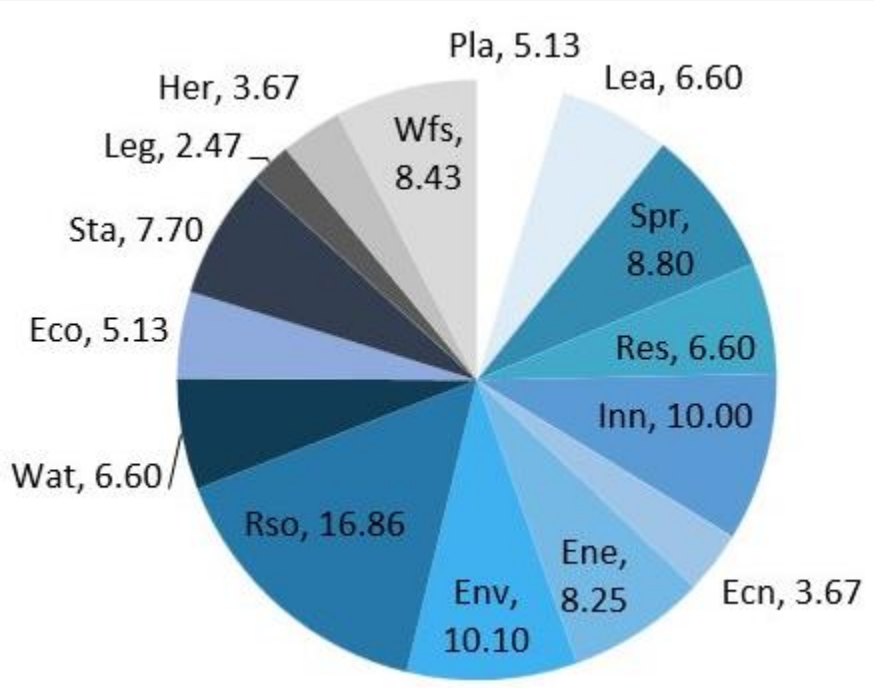


How IS Ratings work



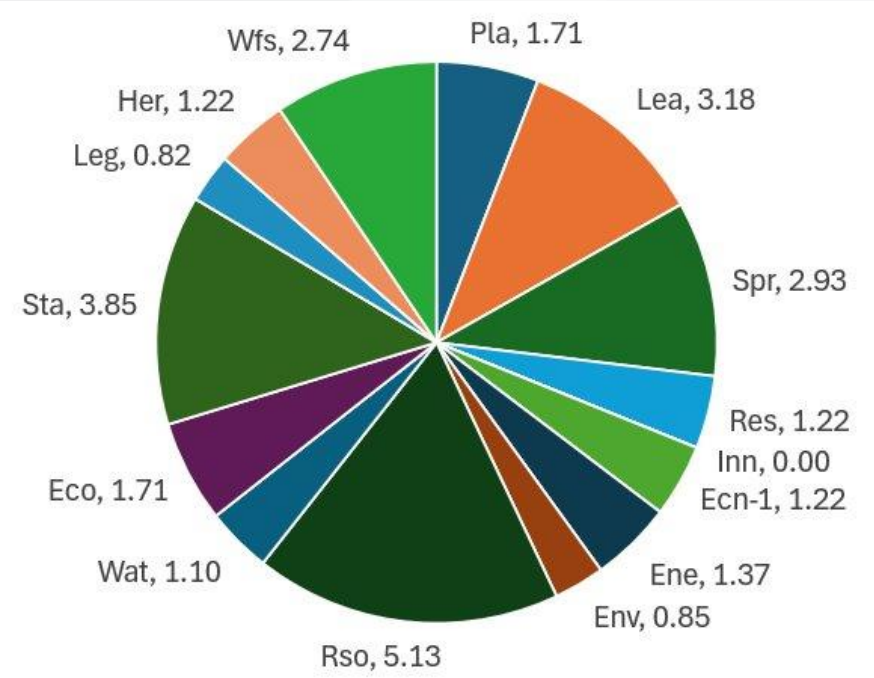
Powering a Bright Future

Available Points



=110 (maximum score)

Target Points for NWT D



= 30 points (Bronze rating)

Benefits of the IS Rating Scheme

IS Rating Scheme Return on Investment Report 2020

\$1.6 to \$2.4 for every \$1 spent

- ▀ Reduced energy / water / materials consumption
- ▀ Reduced air emissions
- ▀ Improved ecological value

Wider Benefits



Protection of environmental values -
air quality, water quality & biodiversity



Development of human and social
capital



Equitable access to essential services
and social infrastructure



Respect for the rights and cultural
needs of indigenous communities

Activities to date

- ✓ Written a Sustainability Strategy for the NWTD project
- ✓ Emissions modelling for the project
- ✓ Decided which credits and credit levels to target
- ✓ Undertaken a Climate Change Risk Assessment

Next steps

- ✓ Handover to Contractor
- ✓ We have started investigating sustainability initiatives which could be implemented
 - e.g. replacing copper cabling in substations
- ✓ Integration of sustainability initiatives within the design phase
- ✓ Collate evidence to submit to Infrastructure Sustainability Council to receive a Design Rating!

Questions?

Thank you for listening!

Any other business?



Powering a
Bright Future

www.tasnetworks.com.au