

NWTD Stakeholder Liaison Group

25 June 2024

Today's agenda

- Round robin
- NWTD update
- REZ update from ReCFIT
- Economic Development Action Plan
- Update from Marinus Link
- Community investment

Member round robin

NWTD update

Key milestones

Milestone	Estimated date
Appointment of Head Contractor	August 2024
Submission of Contingent Project Application 1	August 2024
Final Investment Decision (FID)	December 2024
Submission of Contingent Project Application 2	February 2025
Lodge Environmental and Planning approvals with Tasmanian Planning Commission	February 2025
Community Engagement on Environmental and Planning approvals (ahead of public exhibition)	March 2025

Upcoming community engagement

- Penguin Market, Sun 11 Aug
- Devonport Farmers Market, Sat 7 Sept
- Burnie Works BIG Science Fair, Sept
- Burnie Show, Burnie, Fri-Sat 4-5 Oct
- Tulip Festival, Wynyard, Sat 12 Oct
- Tasmanian Craft Fair, Deloraine, 1-3 Nov



Social Licence

- The Energy Charter Better Practice Social Licence Guideline
- Developed by 6 Transmission Service Providers and a Community Outcomes Group
- Annual independent review – June 2024 includes progress report and recommendations



TasNetworks Engagement Advisory Groups

New engagement group model

- ✓ New groups part of new engagement group model, developed with past members and interested stakeholders (part of broader engagement maturity uplift within TasNetworks).



Customer
Advisory
Group



Stakeholder
Advisory
Group



Technical
Working
Group



Local
Government
Working
Group



Major Projects
Working
Group

New stakeholder groups

Customer Advisory Group	Stakeholder Advisory Group
<ul style="list-style-type: none">• 13-16 members• Purpose: provide lived experience/perspectives of TasNetworks customers + energy users• Areas of interest: energy services, tariffs, customer experience, policies, processes.	<ul style="list-style-type: none">• 19 members• Purpose: provide collective perspectives of given communities, groups and organisations• Areas of interest: strategy, regulatory proposals, policies, service/delivery, assets, tariffs, pricing.
<p style="text-align: center;">Both groups will also:</p> <ul style="list-style-type: none">✓ Deliberate on issues that are in the best interests of Tasmanian electricity users✓ Ensure TasNetworks places the evolving needs and expectations of its customers and stakeholders at the centre of business decision making.	
<p style="text-align: center;">Will meet minimum 4/year</p>	
<p style="text-align: center;">Members will be onboarded at workshop end of July 2024, first meetings Oct TBC.</p>	

REZ update

Stewart Sharples, Director, Major Engagement Projects

Economic Development Action Plan

SLG Priority Actions

Theme 1: Workforce Development, Skills and Training

Opportunities	Actions
An organisation responsible for workforce development and coordination	Regional stakeholders to create a dedicated organisation tasked with overseeing the critical and complex task of workforce development and deployment for Project Marinus and other major projects in Tasmania (including the provision of the supporting social infrastructure)
	Explore the development of curriculum aligned material for engagement with schools, students, parents and teachers around the renewable energy future

Opportunities	Actions
Develop and improve skill development pathways	Map out skill demand over-time and breakdown by occupation for NWTD, induced investments and flow-on opportunities and share with education, skills and training partners
	Define the education / training pathways to careers in renewable energy sector
	Explore and develop innovative 'blended' education pathways for vocational and tertiary education into the industry
	Increase the number of supervisors and teachers to increase the capacity of the training system to take on more apprentices in Tasmania
	Develop a Renewable Energy Training Centre of Excellence in the North West region of Tasmania

Opportunities	Actions
Expand the regional workforce	Plan for, coordinate and deliver social infrastructure to support a larger workforce in the region
	Build partnerships and leverage existing outreach efforts and programs to directly reach, communicate with and encourage participation of diverse groups
Coordinate regional workforce development and deployment	Develop a micro-credentialing scheme making it easy for life-long learning and career switching into the renewable energy industry and between projects
Be a model project proponent, driving local economic and social benefits for the region	Expand skill demand forecasts (like SOFIA) to include broader range of renewable energy projects in the region

Theme 4: Local and Regional Community Benefits

Opportunities	Actions
Focus on creating an enduring economic legacy	Support opportunities to embed new arrivals into the community and mitigate against a FIFO mindset forming
	Understand the current housing supply profile for the region and define the impact NWTD and the induced investments may have
	Explore adaptable housing options for project workforce

Marinus Link update

Mark Lindsay, A/Head of Communications and Community
Engagement

Community investment

Community investment

- Design and Approvals + Early Works phases (2021-2025):
NWTD community investment program
- Includes community grants up to \$1-10k such as supporting Burnie Community House, Kentish Men's Shed, Cradle Coast MTB Group, City Burnie Lions Club, Rural Health Tasmania.
- Also includes sponsorships/events such as the Taste of North West, conferences, and larger partnerships such as Rural Alive & Well.



Any other business?



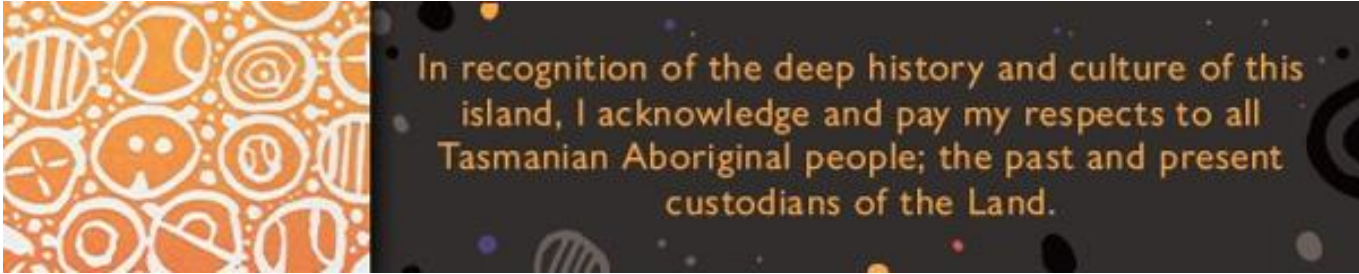
Powering a
Bright Future

www.tasnetworks.com.au

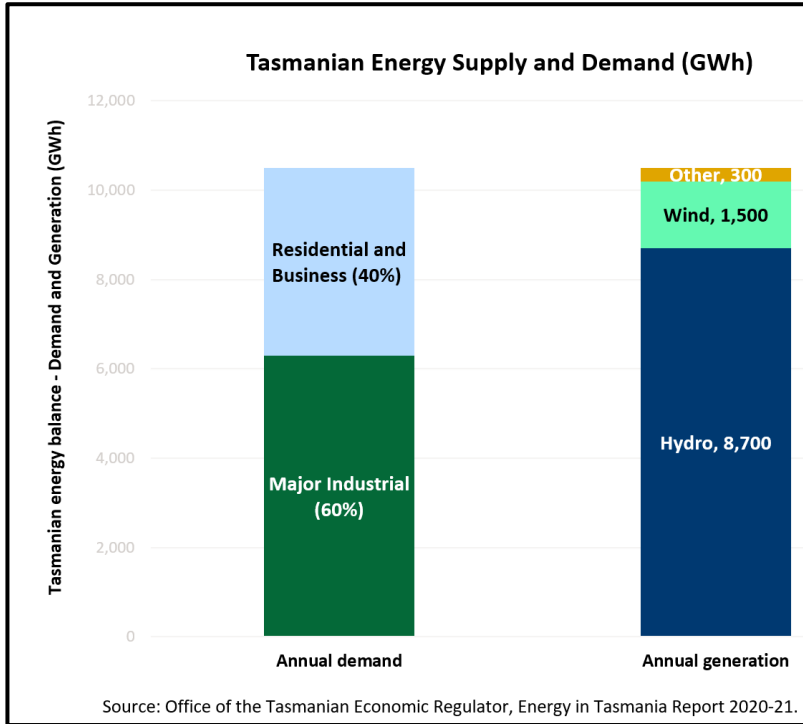
Public



Proposed North West Renewable Energy Zone



Why more renewables in Tasmania?



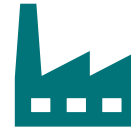
Reduced rainfall in hydro storages



The move to electrification of transport and industry



A growing population



Attract new industries

Why REZ?



How did we get here?



Minister announced the NW region to undergo further investigation to inform the establishment of REZ in December 2022



Worked with the community throughout 2023 to understand community values

- Stakeholder reference group
- Mapping important places
- Presence at community events



Government election commitment in early 2024

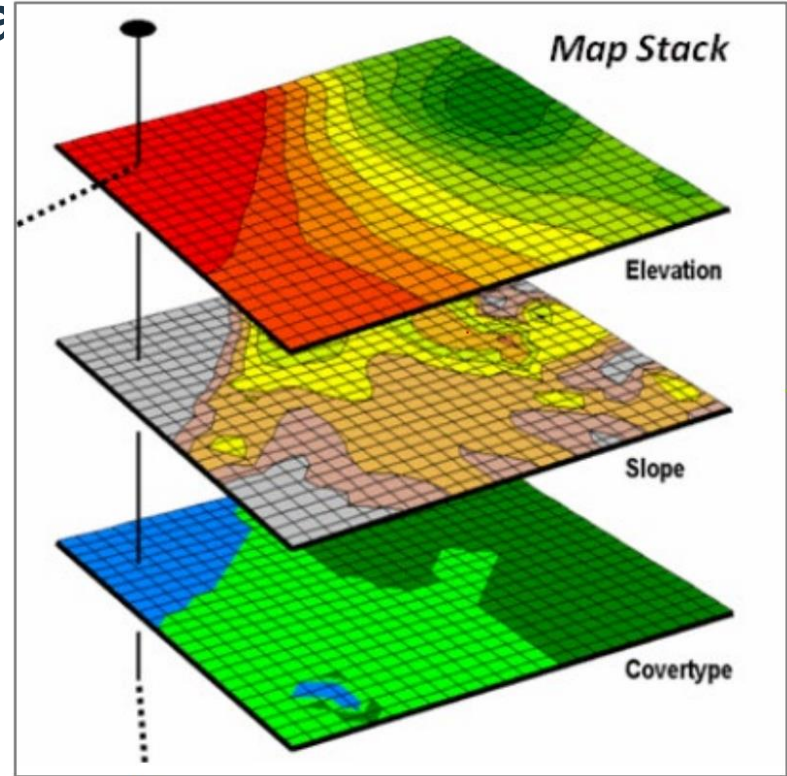


Proposed REZ announced May 2024

Defining the Proposed Bounda

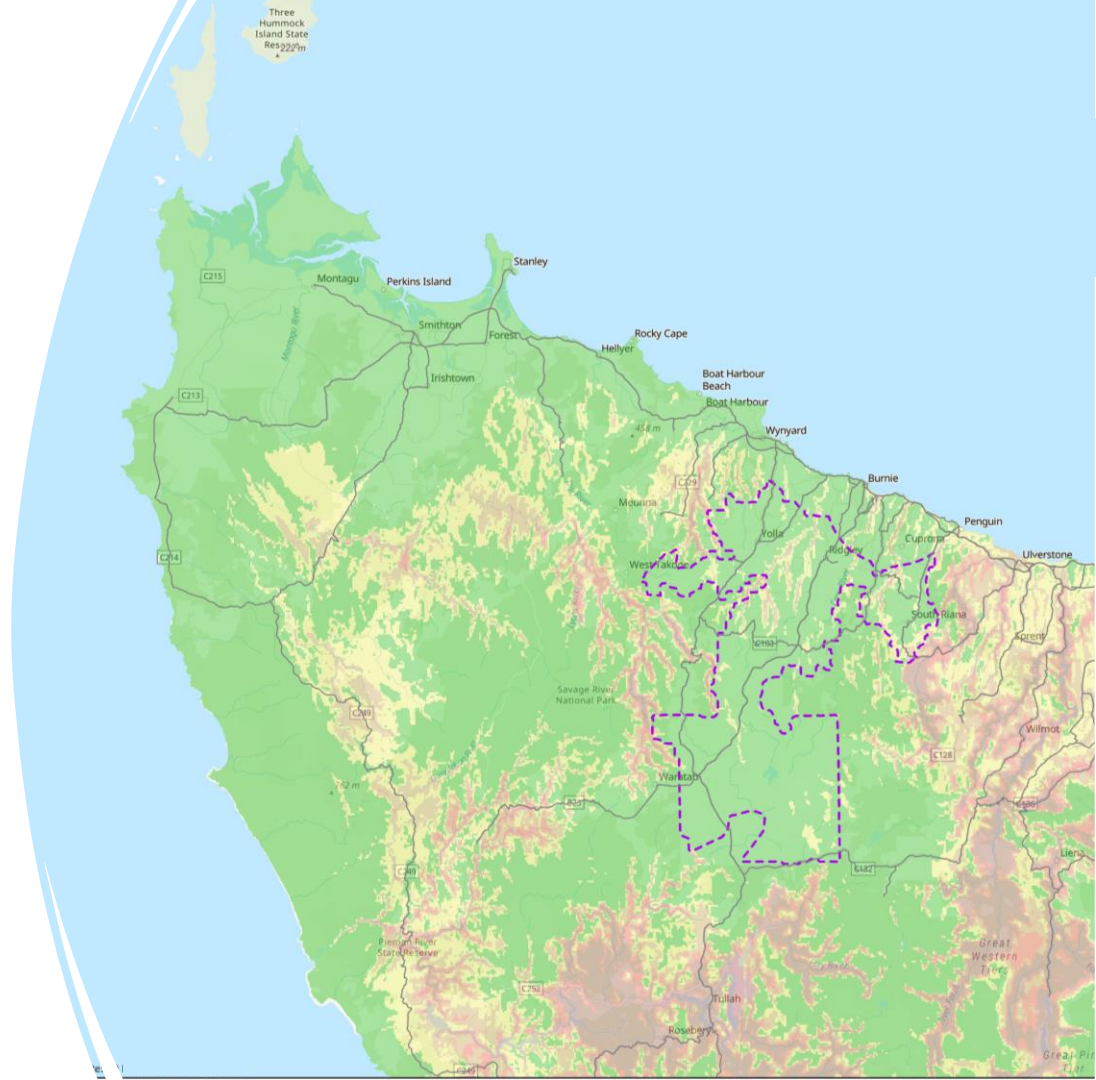
The Spatial Approach

- To geographically define REZ, ReCFIT engaged Aurecon to undertake a GIS MCA approach to identify and compare locations.
- The analysis ultimately aimed to identify areas that are going to be the least contentious for future development.
- A cross-agency Technical Working Group coordinated data input, ranked the ability of land uses/values to co-exist with renewables and provided feedback.



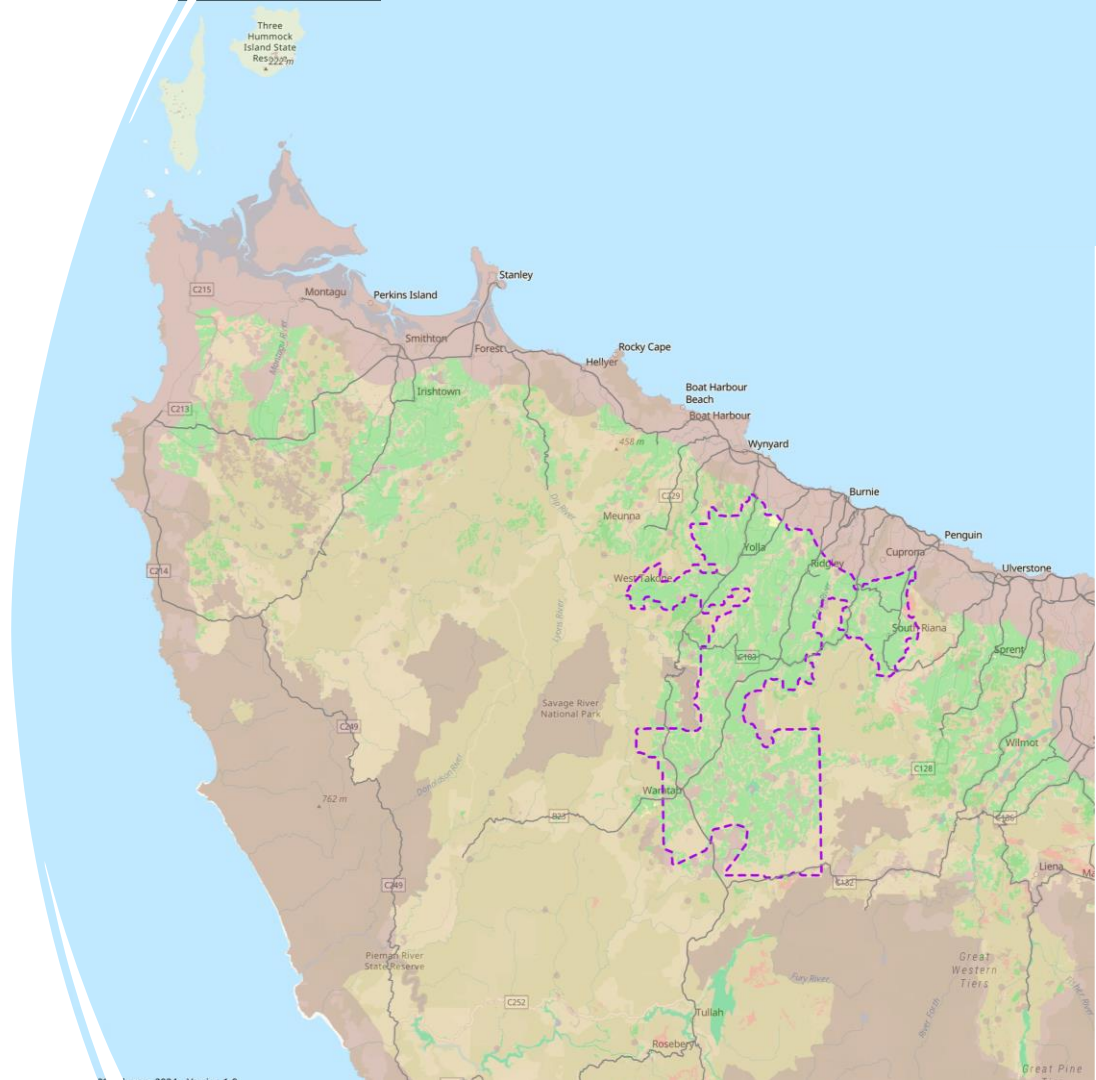
The Spatial Approach

- The analysis first considered wind resources across Tasmania, mapping out where the **strongest winds** in Tasmania were.



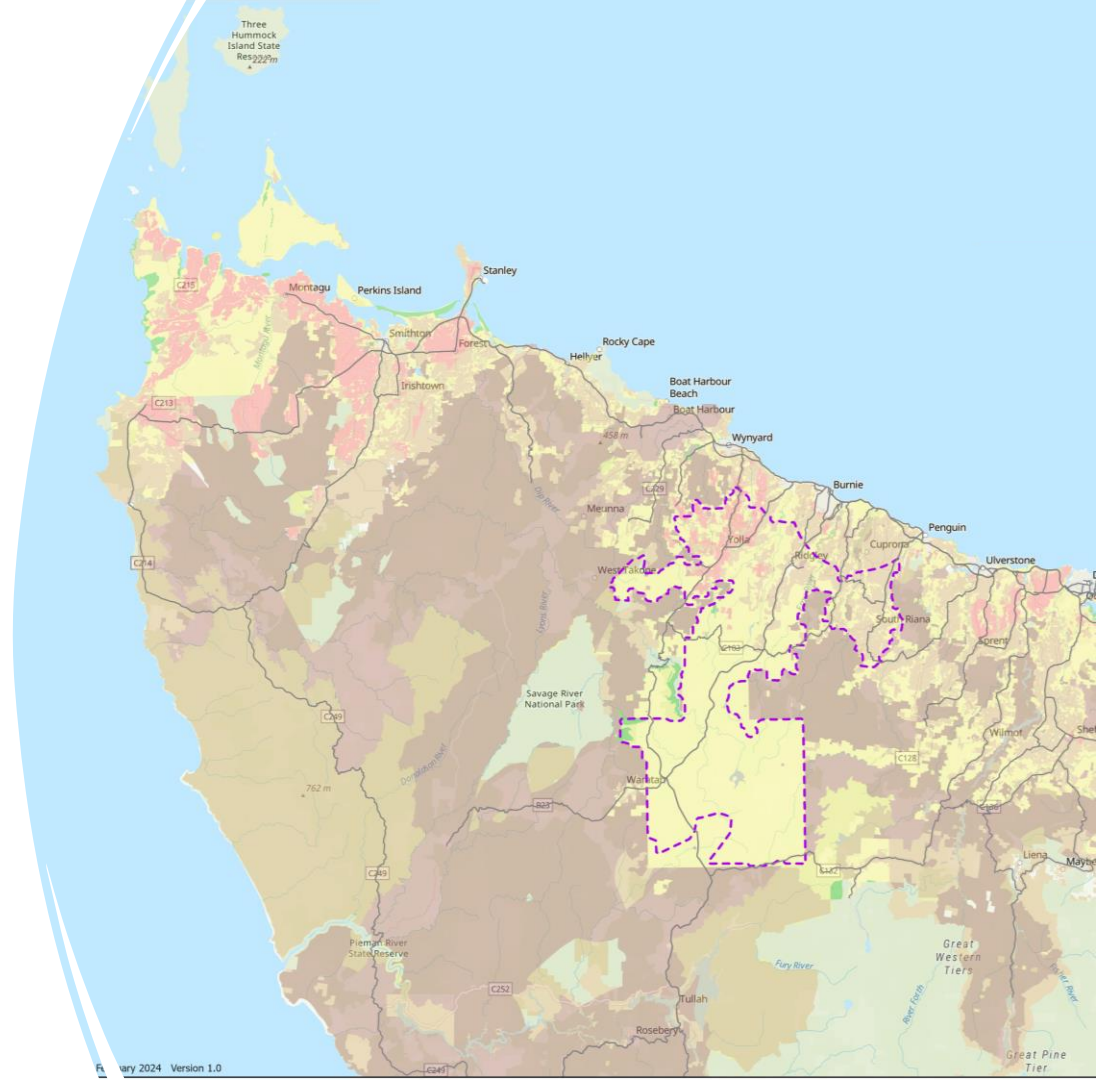
The Spatial Approach

- The analysis input **environmental and heritage data** such as:
 - Parks and reserves;
 - Threatened flora and fauna;
 - Threatened vegetation communities
 - Ramsar wetland;
 - Raptor nests;
 - Tasmanian Heritage register;
 - Aboriginal Heritage.



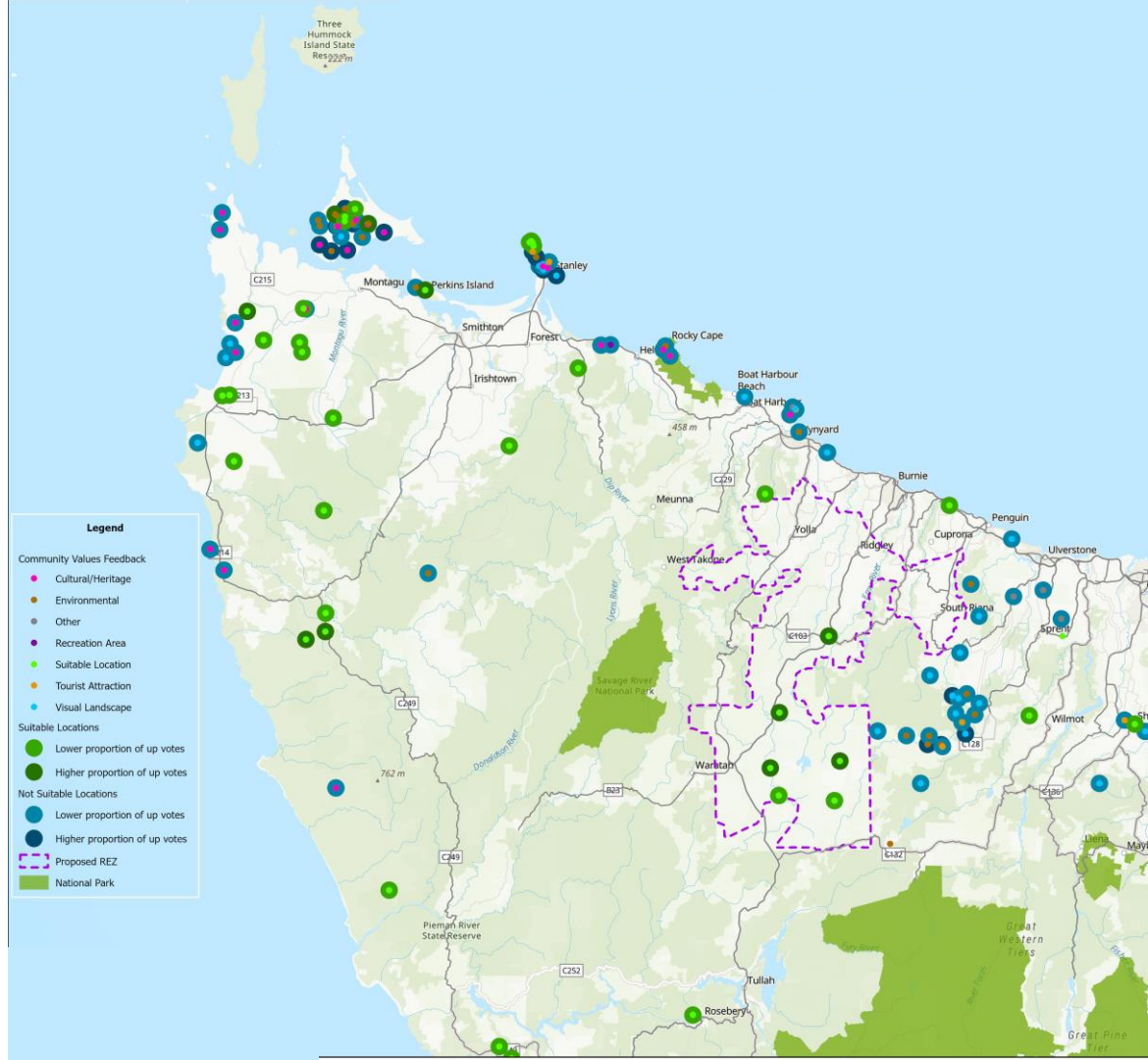
The Spatial Approach

- It then input **land use data**, such as:
 - Catchment scale land use Tasmania;
 - Land capability scale;
 - Permanent timber production land;
 - Private timber reserves;
 - Mining leases and licenses;
 - Planning scheme zones.



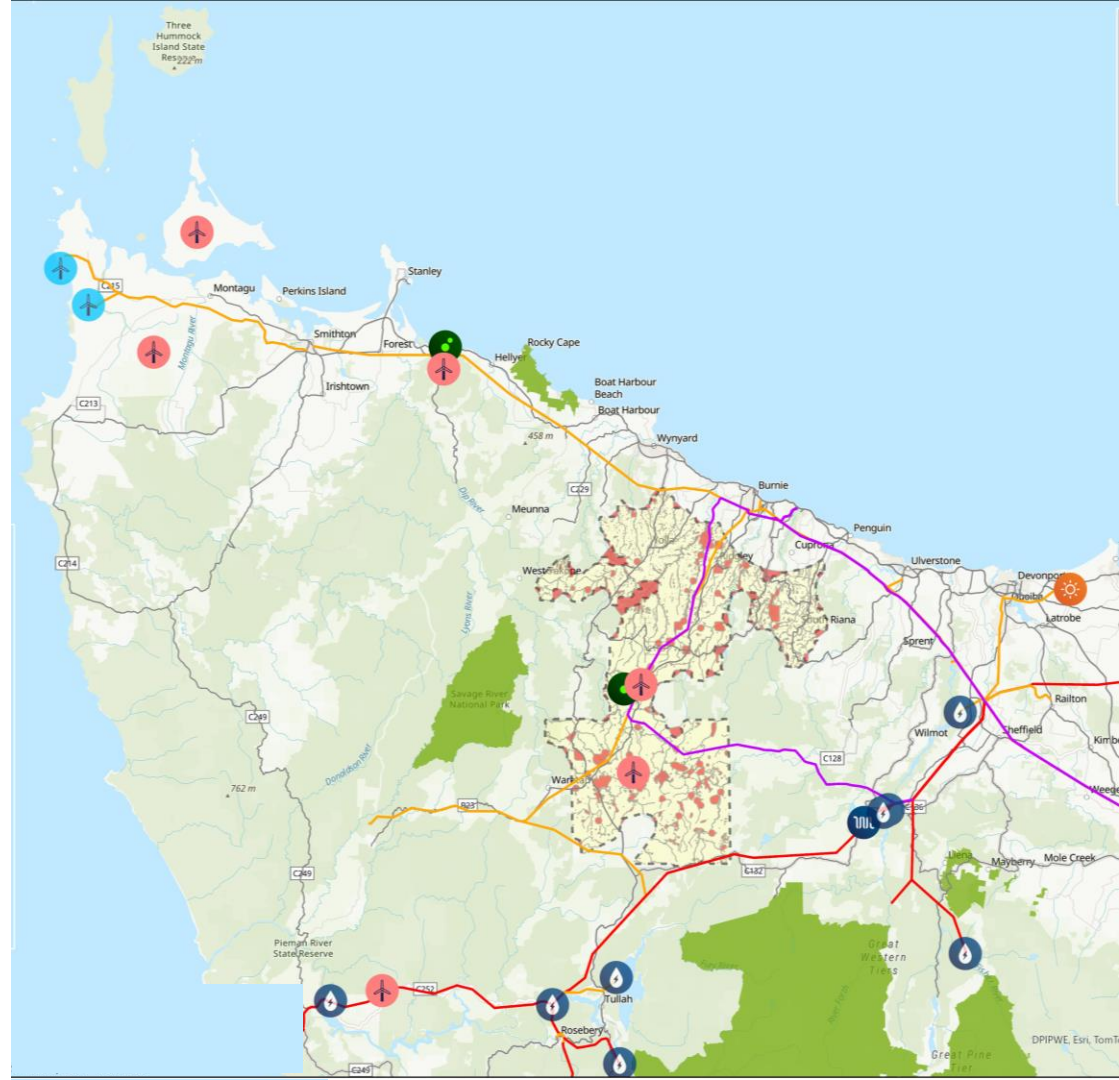
Mapping Important Places

- In parallel to a spatial analysis, we ran a **community feedback** initiative.
- We asked the public to identify places that were culturally and environmentally important, as well as places where renewable energy projects could be located.
- We are now hosting a second iteration of this on our website, focusing only on the Proposed REZ



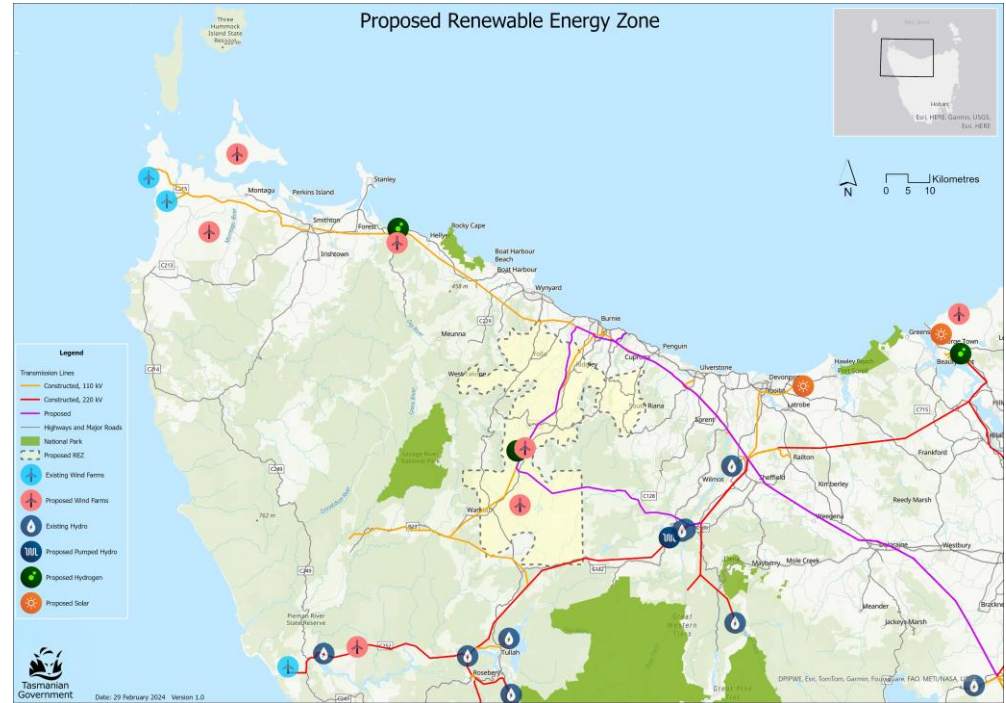
Residual areas within the zone

- The Proposed REZ was identified for its capacity to host multiple renewable energy projects.
- However, there are sites of high constraint located within the zone that proponents will need to avoid or manage. These include:
 - Residential uses and amenity impacts
 - Agricultural operations
 - Threatened species and habitat
 - Reserved and conservation land
 - Aboriginal cultural values (both intangible and landscape)
 - Historic Heritage
 - Future forestry operations
 - Mining exploration requirements



Proposed REZ

- Closest proximity to transmission
- Largest potential area (95, 301 ha) and capacity (9,520 MW)
- Existing easement for REZ infrastructure – Burnie to Hampshire Hills line
- Existing and proposed projects already located within it
- New generation more likely to co-exist with existing land uses and values



But what have we missed – we want your feedback

Information for landholders

No obligation to host a renewable energy project.

Landowners would need to reach an agreement with proponents for use of their land.

Proponent best practice is to also have agreements with neighbouring properties.

There is an EOI for hosting projects on our website.

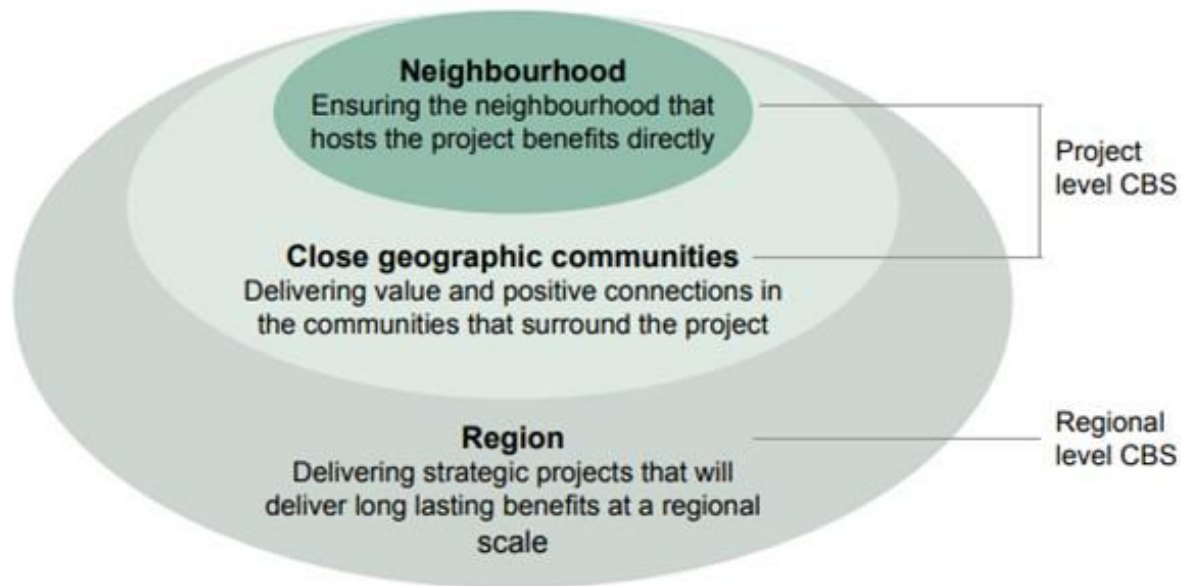


Community Benefit Sharing



- Little change in our electricity network in two generations.
- Proponents know they can't force projects through and need to have positive relationships with communities.
- They choose to allocate funds towards community projects – mitigate impacts or improve the region.
- Fund distribution – grants, scholarships, funding partnerships, co-ownership or investment.
- Level of funding depends on a project scale - per MW (generation) or per kilometre (transmission) rate

Community Benefit Sharing



Scales of benefit sharing

A proposed regional CBS framework

Under a REZ approach, communities can benefit from a more strategic coordination of community benefit sharing that creates positive benefits to last for generations.

A regional approach to CBS can:

Provide opportunities to pool funding for larger projects

Reduce consultation fatigue

Build community capacity to engage.

Overcome diminishing small local community projects to fund

Proposed CBS model

Who will design, govern and administer the regional CBS fund?

- Guidelines for CBS co-designed with Community Advisory Board (EOI open)
- Administration from existing regional organisation, funds held by state

Funding

- Contributions made by proponents connecting to the REZ
- \$800-\$1,800 per MW of installed capacity per year for windfarms – 80% to regional fund
- CBS administration costs funded by proponents

Regional priorities and benefit delivery?

- Health
- Education
- Housing
- Environment
- Tasmanian Aboriginal people

How benefits are delivered?

- grants
- strategic long-term funding partnerships
- scholarships

Elements of CBS co-design

Questions we don't yet know the answer to include:

- Should the scheme only apply to REZ projects or all those in a region? What is the “region”?
- Where will funds be collected from? (Generators, Transmission, Batteries and/or Load – all or some?)
- What are the community-defined priorities regional benefit sharing will address?
- How and when will the benefits be delivered?
- What is the financial division of benefits across project level and regional CBS?

Consultation paper available at www.renewableenergyzones.tas.gov.au

Legislation

Key Features

Declaration of a REZ

Access Scheme

Physical cap on connections

Cost Recovery

Regional Community Benefit Sharing

Long-term planning and Least Cost Test

Functions and roles

Not an exemption
from everything!



Engagement opportunities

Consultation Program

May 2024	Consultation Elements open <ul style="list-style-type: none">• Proposed boundary• Community Benefit Scheme
July 2024	Consultation on draft legislation opens
Sept 2024	Consultation on legislation, proposed boundary and CBS closes

Engagement to date

- Landholder and community information sessions
- REZ info webinars
- Targeted forums and one-on one meetings
- Briefings with local councils in the north west

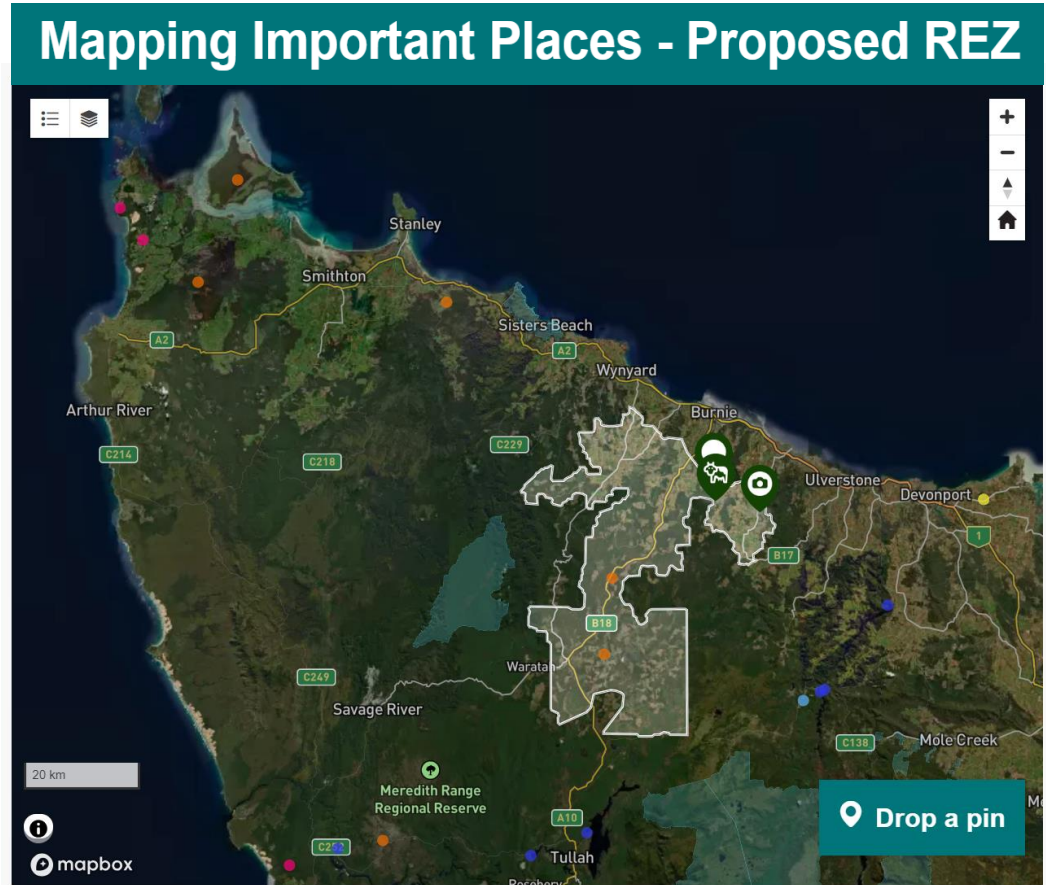
Consultation on the REZ boundary and CBS has been extended!



Next steps

- With the extension of consultation we will run further community sessions.
- Open to these being themed around topics (e.g. input on the proposed boundary area).
- **Let us know how you'd like further engagement and on what issues**

Visit renewableenergyzones.tas.gov.au



Thank you

rez@recfit.tas.gov.au

renewableenergyzones.tas.gov.au



Renewables, Climate and Future Industries Tasmania
Department of State Growth

Marinus Link

NWTD SLG Meeting

Tuesday 25 June 2024 (online)



Agenda

Project update

Overview, timelines

Heybridge site

Environmental approvals

Engagement



Project update

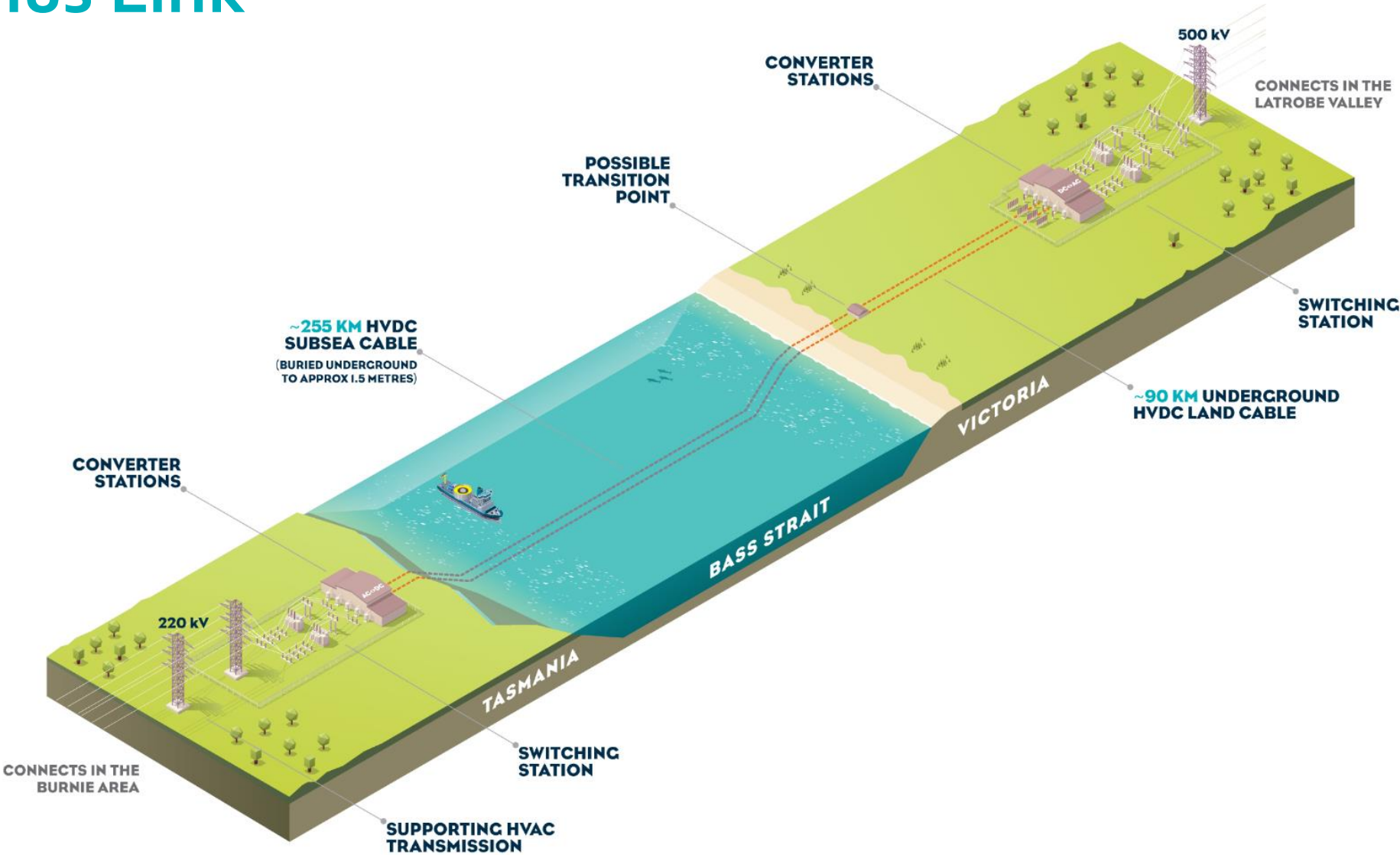
TasNetworks – 2018

Australian, Tasmanian and Victorian governments – March 2024

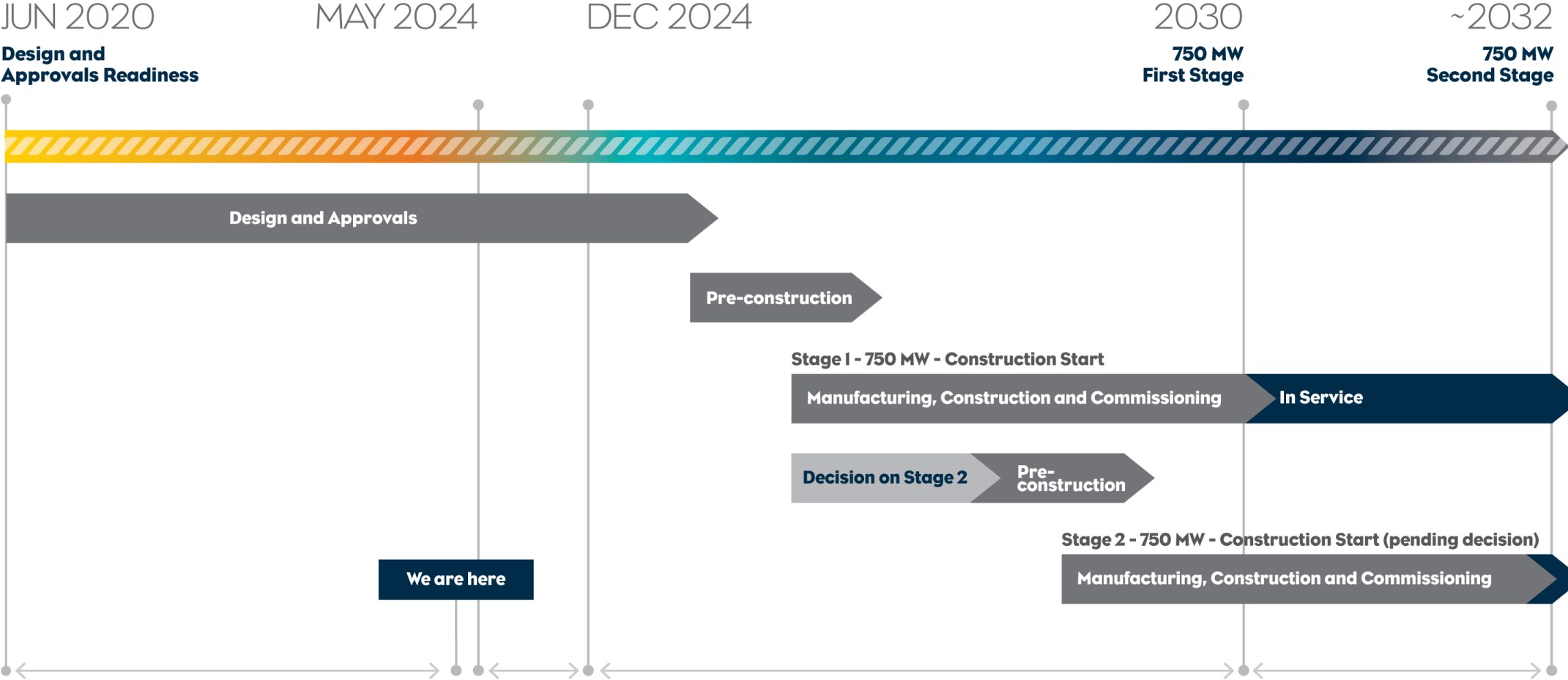
Final Investment Decision

Victorian – new energy transition

Marinus Link

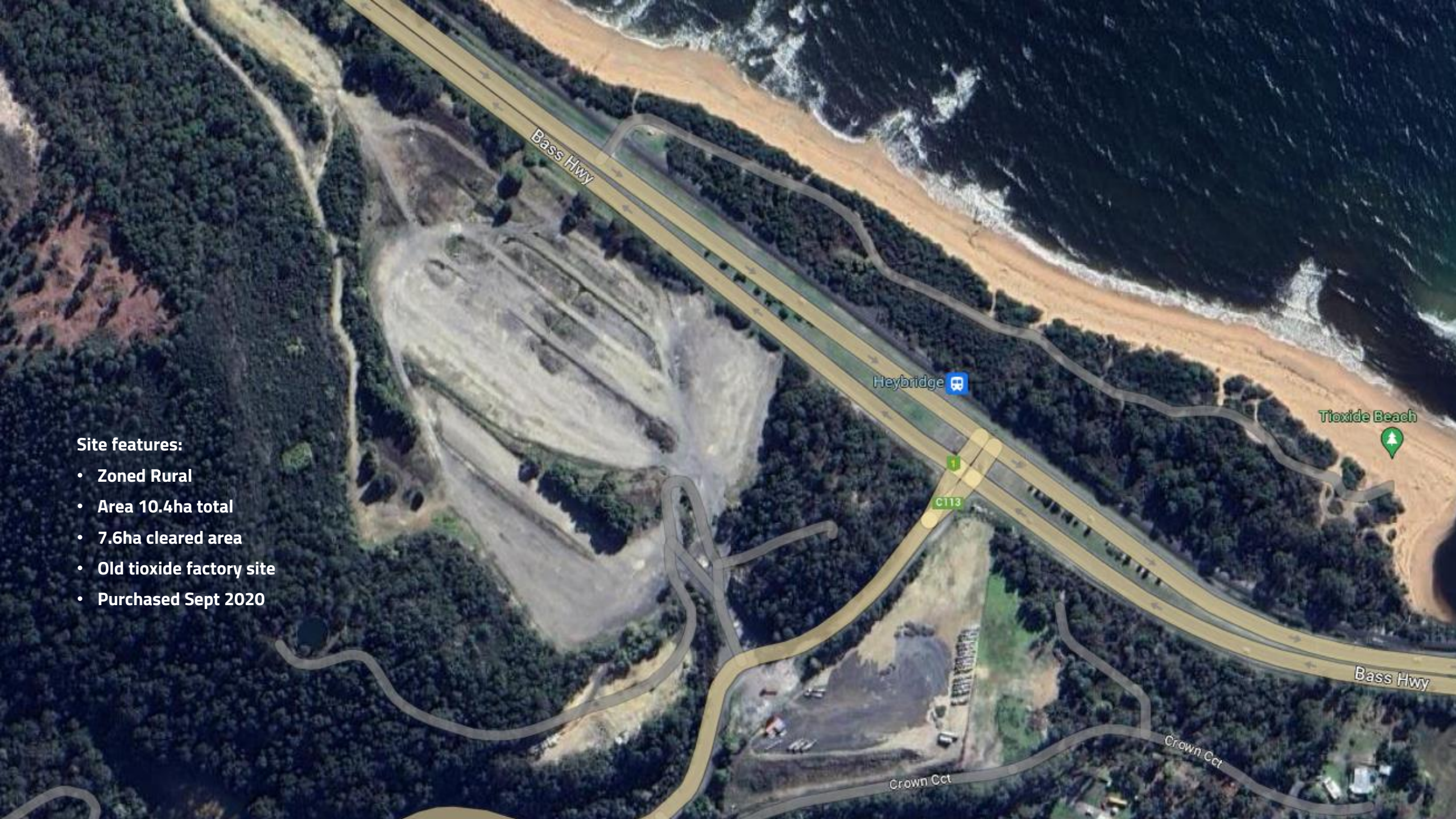


Project Timeline



Site features:

- Zoned Rural
- Area 10.4ha total
- 7.6ha cleared area
- Old tioxide factory site
- Purchased Sept 2020

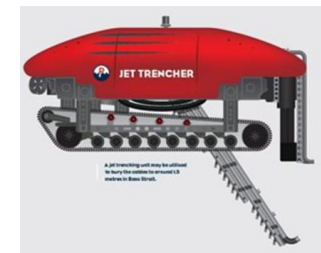
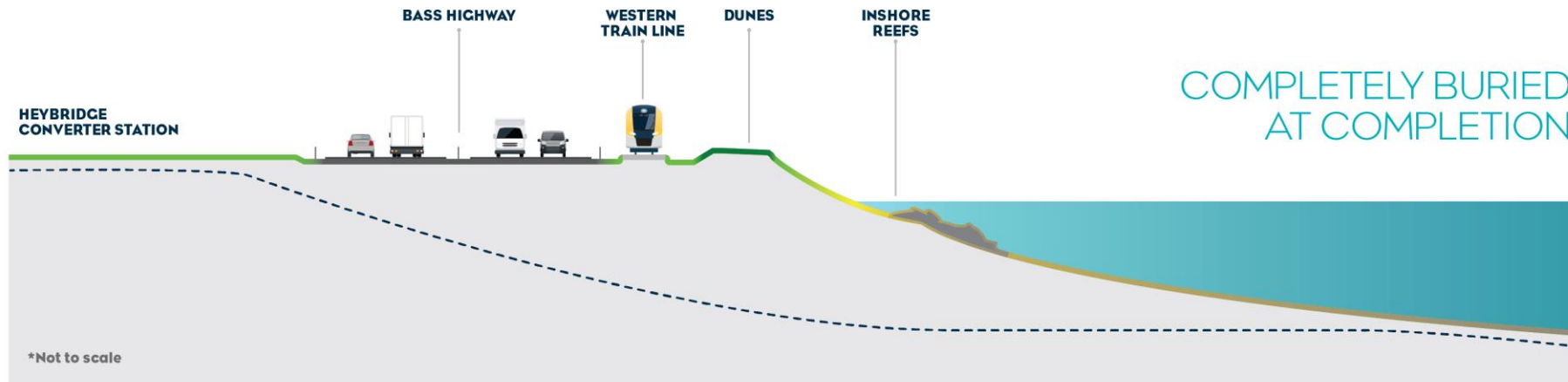
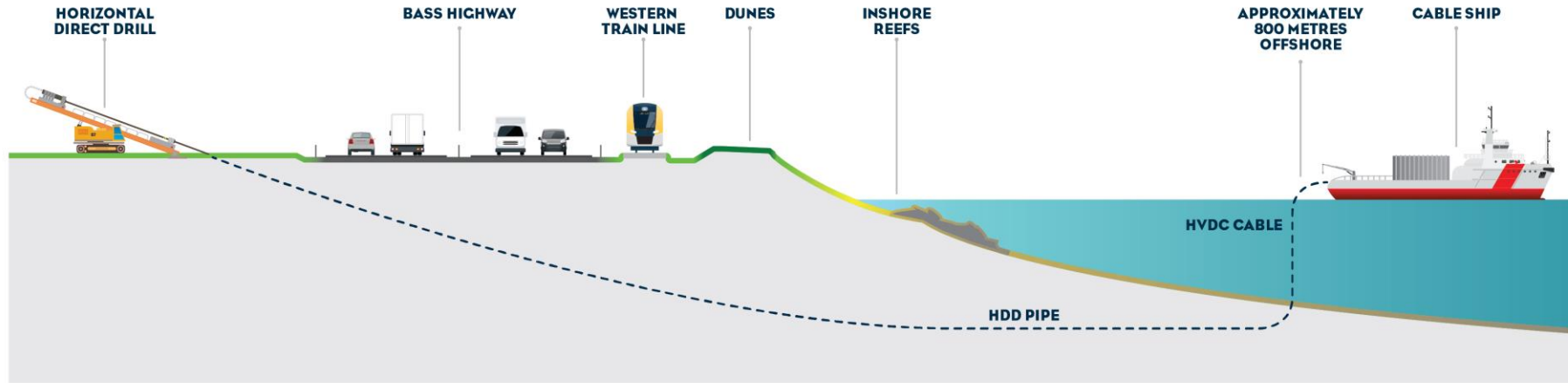




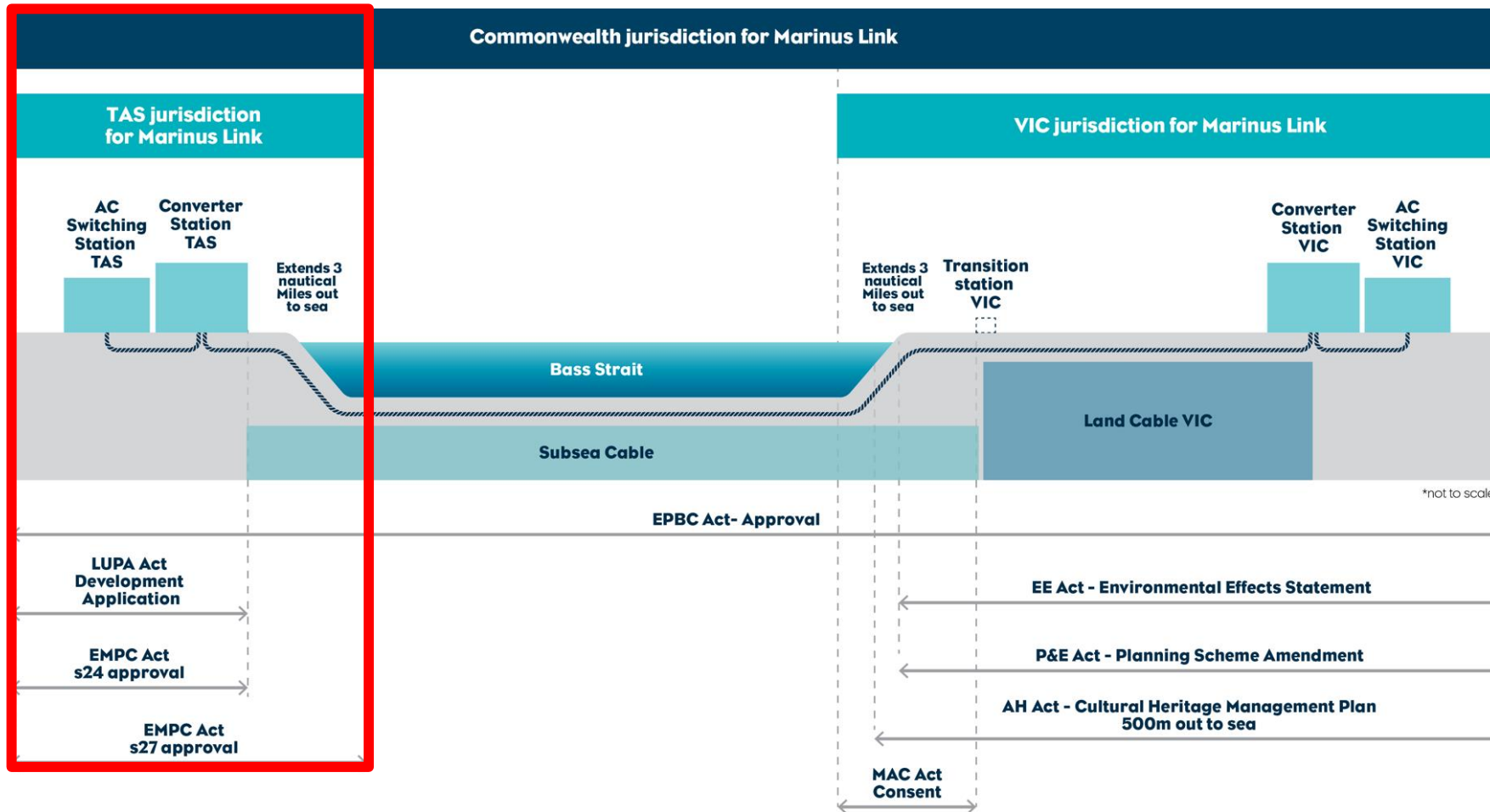
Heybridge Converter Station

Shore crossing

INDICATIVE CONSTRUCTION



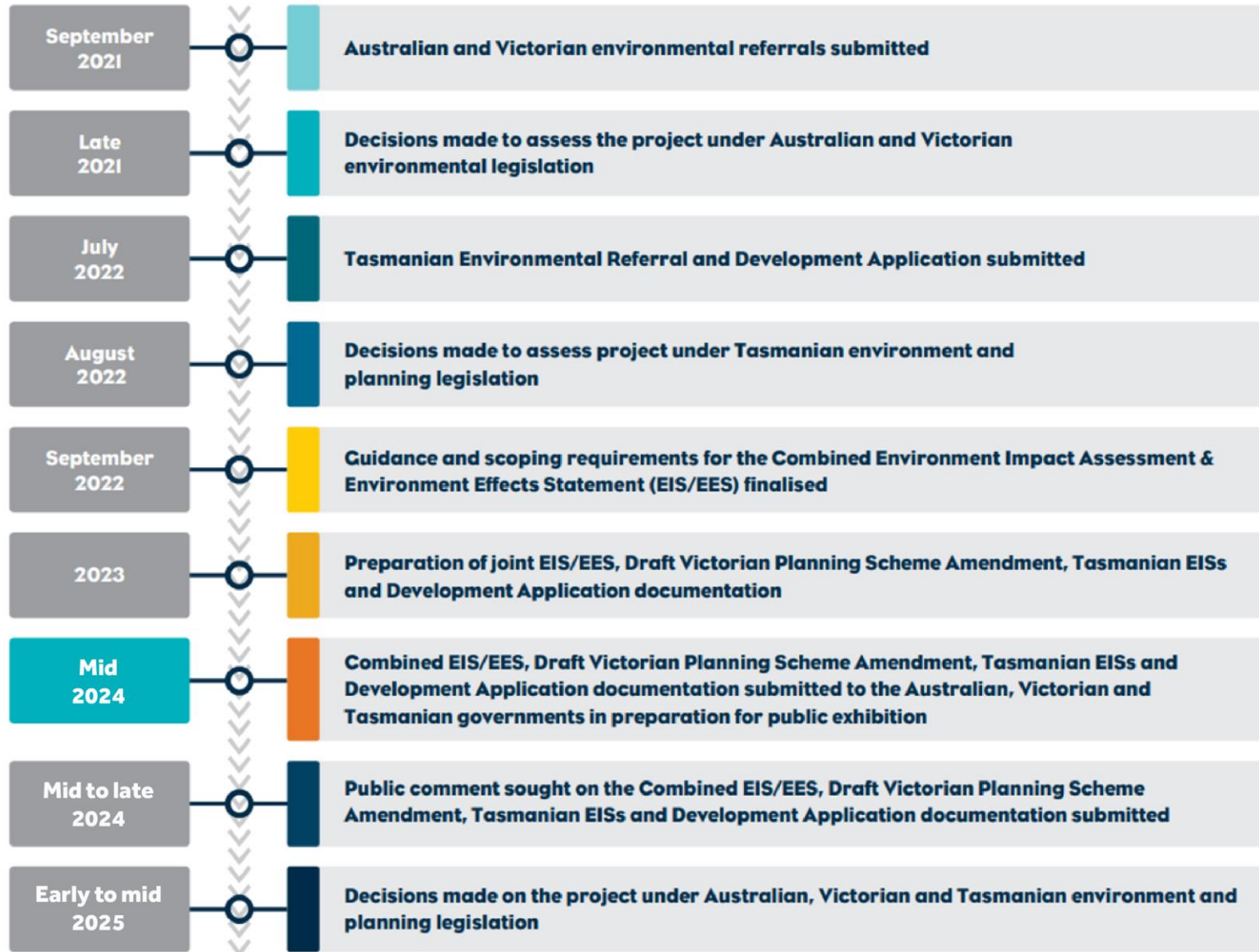
Primary environment and planning approvals



In Tasmania Marinus Link is preparing:

- one Development Application including one Environmental Impact Statement for the Heybridge Converter station
- one Environmental Impact Statement for the Shore crossing and subsea and underground cables

Environmental approvals timeline



What have we assessed?



Environmental Performance Requirements

- As part of the EIS/EES, an Environmental Management Framework has been developed for Marinus Link.
- This provides an overarching framework to address all environmental requirements and manage environmental outcomes for Marinus Link.
- The framework provides clear accountabilities for the implementation of Environmental Performance Requirements (EPRs) during the development and delivery of the project.
- EPRs have been recommended by specialists through the EIS/EES process.
- The Minister for Planning will review the Framework as part of the EIS/EES process, and may decide to require amendments to it, or the EPRs, as part of his approval decisions for each project.
- Marinus Link and their construction partner/s must comply with the relevant project approvals and EPRs throughout the project's design, construction, operations and decommissioning.



More information

For more information on the project's EPRs, view Chapter 2: Environmental Management Framework in Volume 5 of the EIS/EES.



How to make a submission



Make an online submission at engage.vic.gov.au/MarinusLink-IAC



Submissions must include your name and address and must relate to topics in EIS/EES.



Submissions on the EIS/EES must be made in writing and received by 11:59pm on Friday 12 July 2024.

Engagement focus:

- ✓ NW Tas Engagement Specialists
- ✓ EIS (Commonwealth) / EES (Victoria) Public Exhibition – 31 May to 12 July
 - ✓ Drop-in session: Cradle Coast Authority Future Energy Hub – Thursday 20 June
 - ✓ Drop-in session: Cuprona FC – Thursday 20 June
- ✓ Tasmanian EIS (Tas) / Development Application (BCC) Public Exhibition - August (TBC)
- ✓ Tasmanian Aboriginal Community / Environment / Industry / Government
- ✓ Workforce accommodation planning
- ✓ Community benefits sharing



Subscribe - Contact Us Marinus Link

Mark Lindsay

A/Head of Communications and Community Engagement

Mark.Lindsay@marinuslink.com.au

0457 777 076